



BELLEVUE
COLLEGE

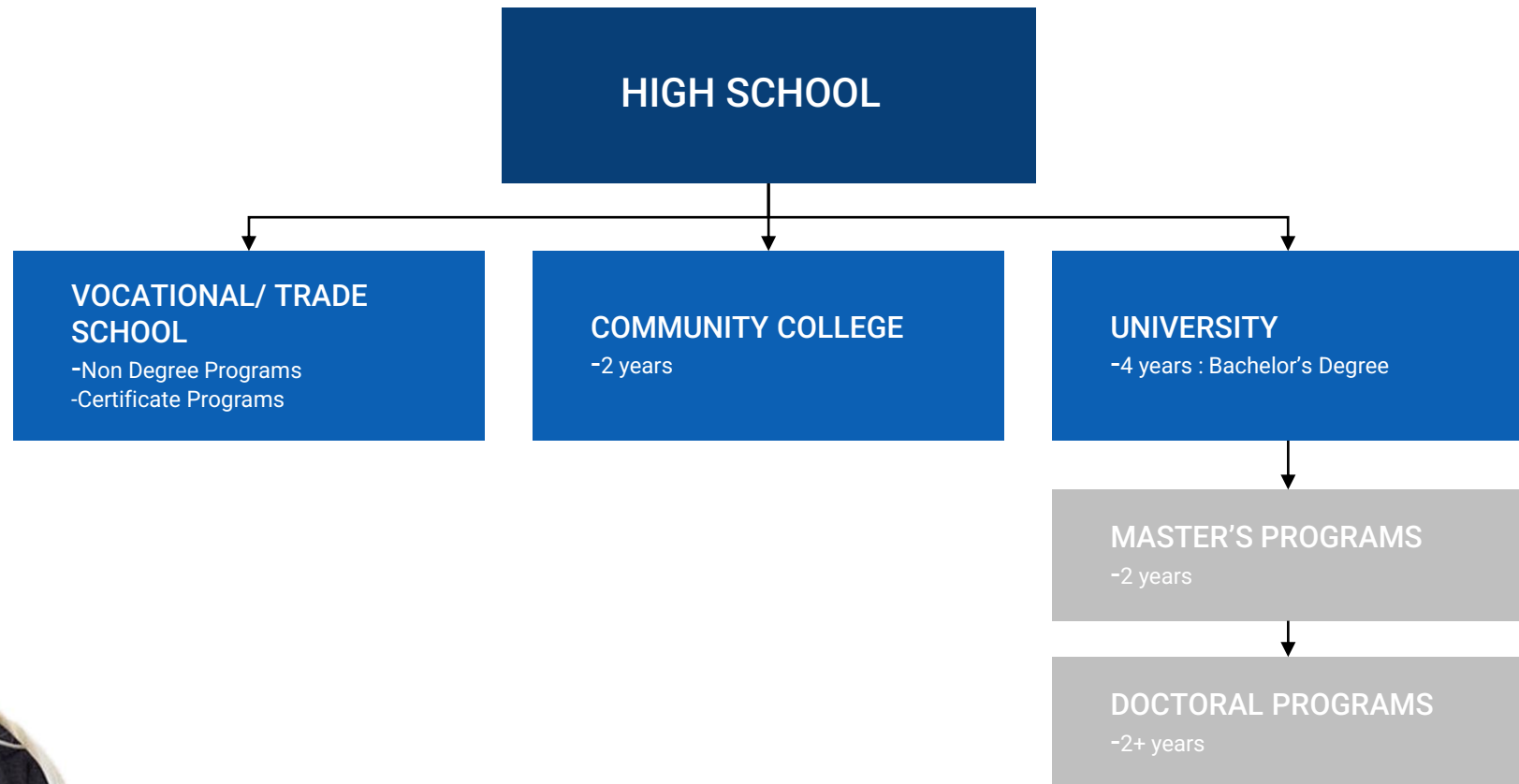
BENEFITS OF COMMUNITY COLLEGE

Why Choose Bellevue College





US EDUCATION SYSTEM





✓ ADMISSIONS

Admissions requirements are easier

Bellevue College (BC) requires TOEFL 61. Most universities require TOEFL 92. BC admits international students 4 times a year. Universities admit new students once a year, in Autumn only.

✓ AFFORDABLE

Cost are lower. BC's annual tuition is **\$ 12,000**. Public universities in Washington State, the **tuition** is ranging from **US \$26,000 to \$38,000**

✓ SMALLER CLASS SIZE

Teacher student ratio approximately 22 students per class.

✓ PROGRESS

More admission opportunities as transfer student. UW's Transfer vs. Freshman admission rate: 61% vs. 43%

American universities **focus more on grades and classes taken at a 2-year college** than high school grades for transfer applicants.

EARN A DEGREE IN 2 YRS and 2 OPT OPPORTUNITIES

CITY OF BELLEVUE



Bellevue College is located in beautiful **Bellevue City, Washington** and is close to Seattle and surrounded by the Puget Sound, a number of lakes, and a rich environment. It is conveniently located just 15-minute drive to downtown Seattle. The most recognizable companies in the world; **Expedia and T-Mobile** and **Microsoft, Amazon** are all located at Bellevue.

Bellevue is a safe and wealthy City. It is considered to be the best 10 cities to live in and the safest in the US.

In 2019 Bellevue won the best school district in Washington State.



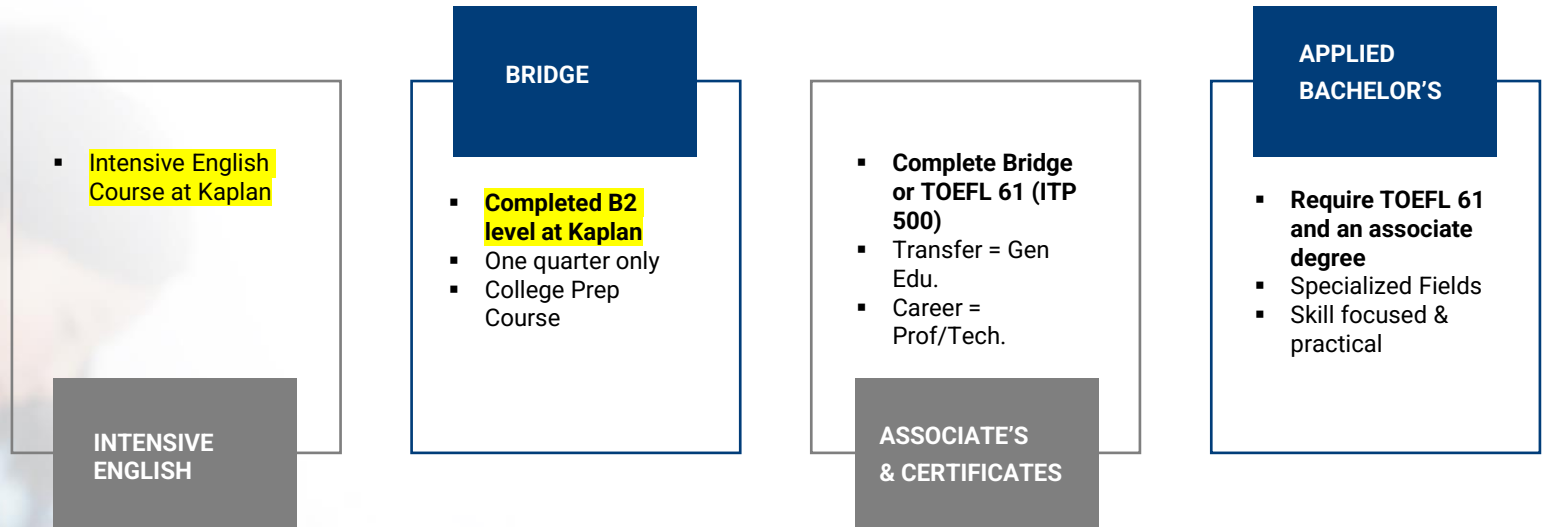
BELLEVUE COLLEGE



- Founded in 1966, accredited public school and the largest among 34 two-year colleges
- **Offers associate's degrees (univ. transfer and Prof./Tech.), applied bachelor's, certificates, and non-degree programs**
- Student faculty ratio 21.7:1, average class size 21.3
- International students is 3% of total student population, 54 countries represented
- Provide brand new residence halls for students, domestic and international



ESL to ACADEMIC



ATTENTION:

- Minimum study length is one quarter (about 3 months)
- Start four times a year in July, September, January, or April.
- Based on each student's goal and English proficiency level, program type and length will differ.

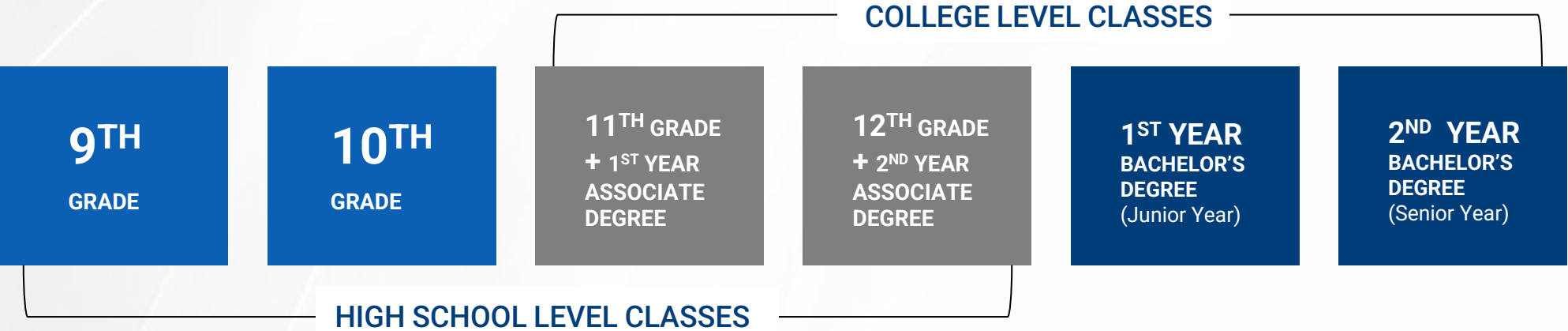


INTERNATIONAL HIGH SCHOOL COMPLETION

College Classes for High School Credit. Washington State has given community colleges the ability to give high school diplomas to students.

Students in the International High School Completion program are taking college classes. It is a way to start college earlier.

Possible to save time and money.

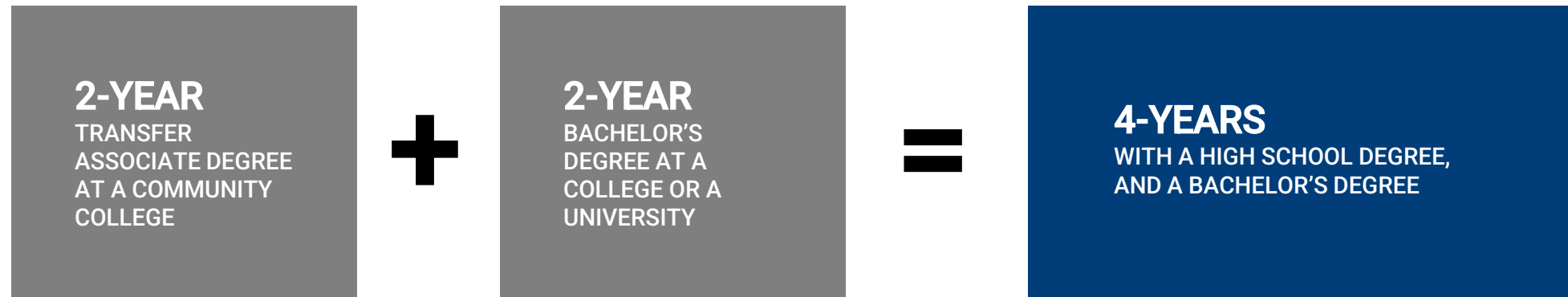


*Average timeline. Time to complete depends on amount of pre-college courses and chosen transfer institution

WHAT IS A TRANSFER ASSOCIATE DEGREE?

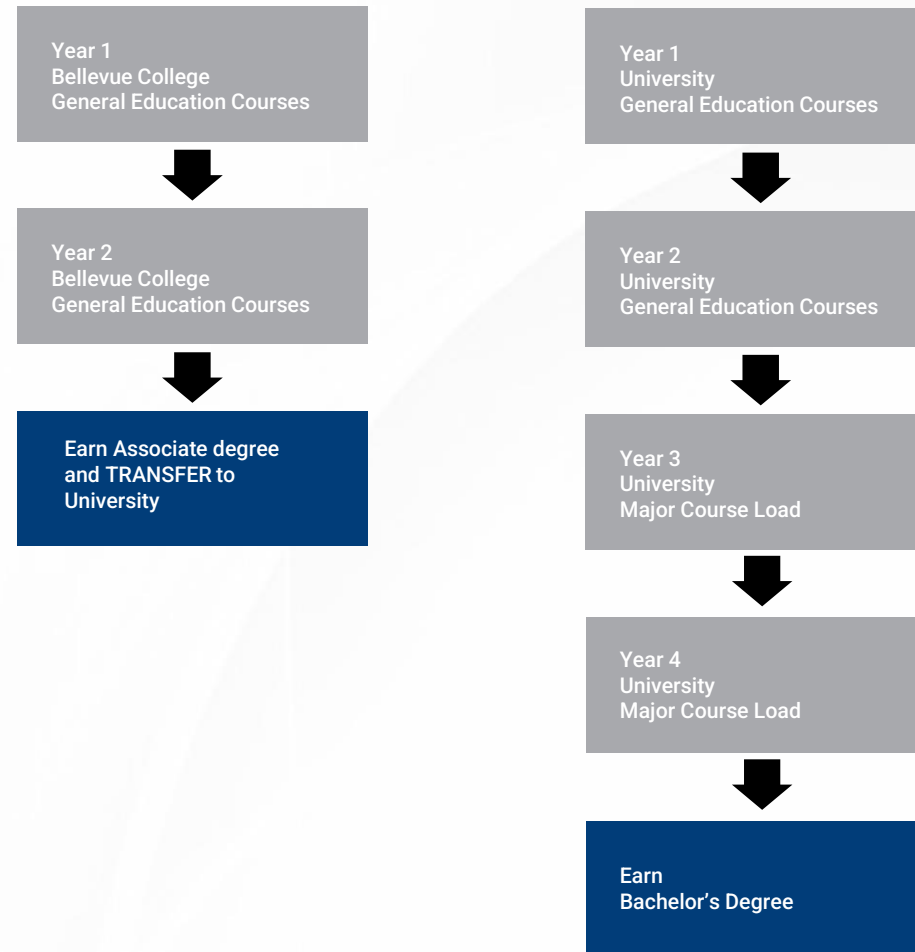
An Associate Degree is a 2 year degree.

A Transfer Associate Degree is **the first 2 years of a Bachelor's Degree**, which are usually 4 years.



HOW DOES THE UNIVERSITY TRANSFER PROCESS WORK?

- For students who wish to complete a traditional, four-year Bachelor's degree
- In the first 2 years, while studying at Bellevue College, students complete "general education" and "pre-major" coursework
- In the second two years, upon transferring to university, the students complete coursework related to a specific major subject

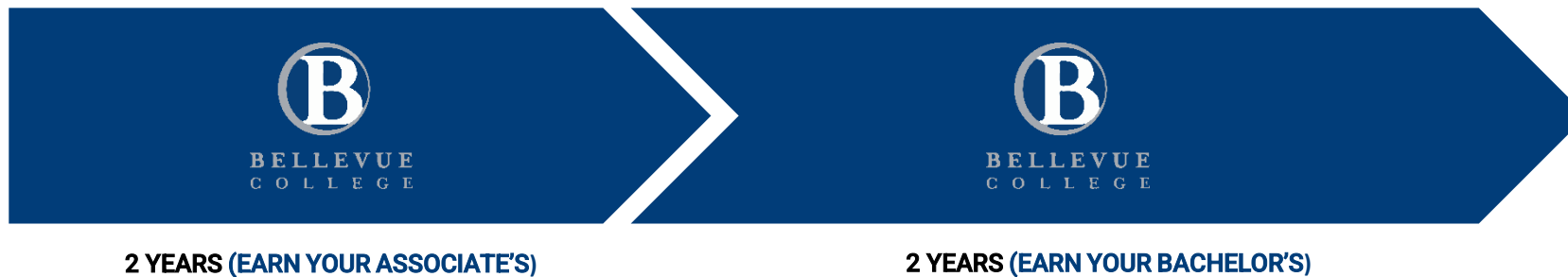



TRANSFER ASSOCIATE DEGREE

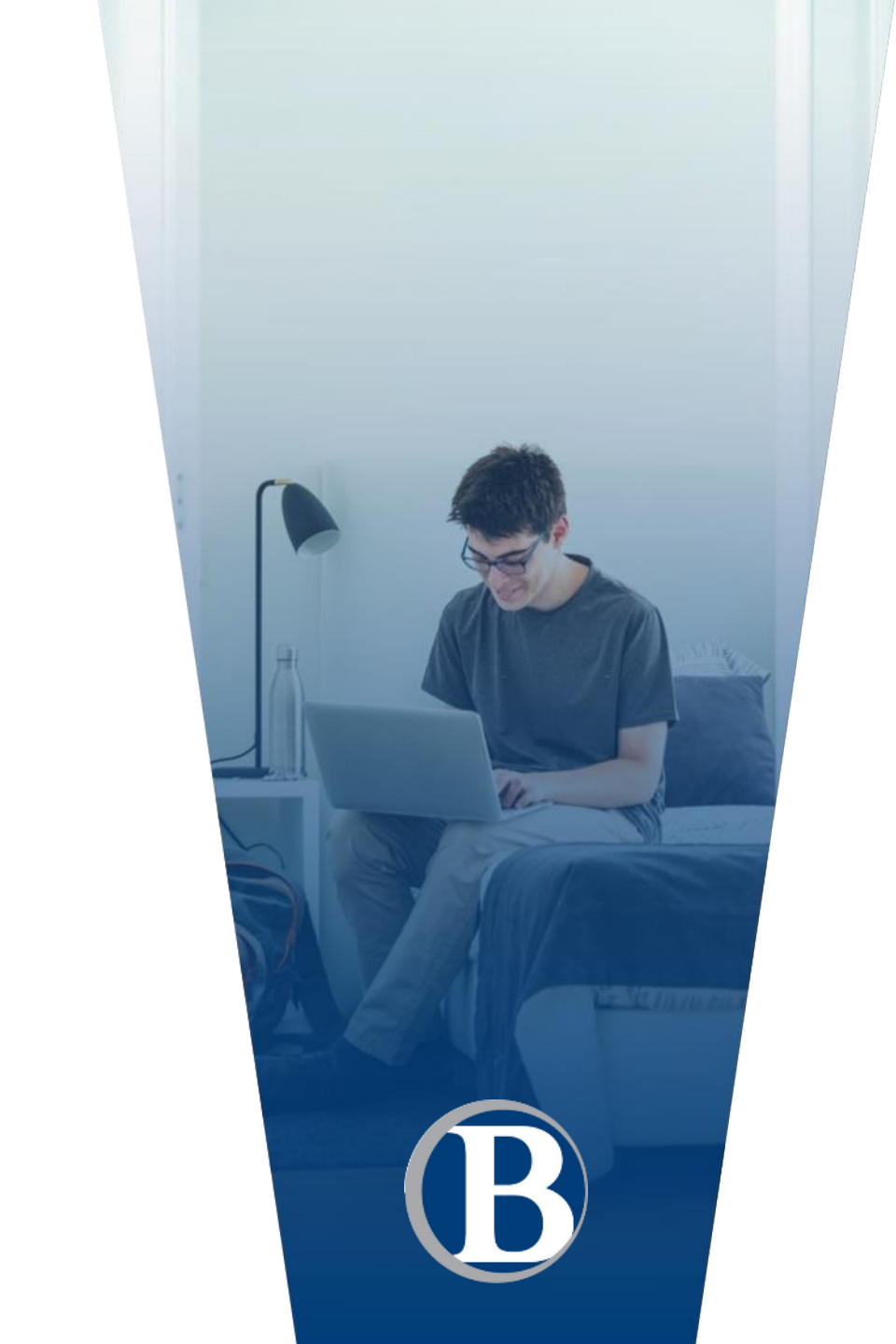


Bellevue College is the **biggest feeder College of University of Washington (UW)**. In 2019, 311 BC students transferred to UW; highest number among colleges in Washington State. In 2019, BC students also transferred to UCLA, UC Berkeley, UC San Diego, U of Illinois at Urbana-Champaign etc.

APPLIED BACHELOR'S AT BC



- 
- Bellevue College is a vibrant, active community with a wide range of activities, clubs and events for almost every area of interest.
 - Join one of the nearly **80 active clubs** or start a club of your own!
 - We offer more than **60 permanently-funded programs** providing educational, cultural, and social activities. Get engaged with the campus community and explore avenues related to career or personal interest.



BRAND-NEW STUDENT HOUSING	HOMESTAY	OFF-CAMPUS RENT (SHARED)
<ul style="list-style-type: none"> ▪ Apartment Style ▪ 5 floors, 8 layouts ▪ comfortable, and safe ▪ Includes utilities 	<ul style="list-style-type: none"> ▪ Private bedroom ▪ Includes meals & utilities 	<ul style="list-style-type: none"> ▪ Shared apartment with other tenants ▪ With/without furniture ▪ Shared utility bills with other tenants
<p>Application Fee: \$25 Monthly rent: \$833 - \$1,556</p>	<p>Placement Fee: \$300 Monthly Rent: \$850 ~ \$950</p>	<p>Monthly Rent: \$700+ *Average Bellevue apartment rent is \$2,300+, the price here based on 3-4 tenants sharing an apartment (utility excluded)</p>
<p>No Commute</p>	<p>Average one-way commute: 1-hour</p>	<p>Different, based on location</p>
<p>Living with 400 domestic and international students</p>	<p>Living with hosting families</p>	<p>Living with 2-4 tenants</p>

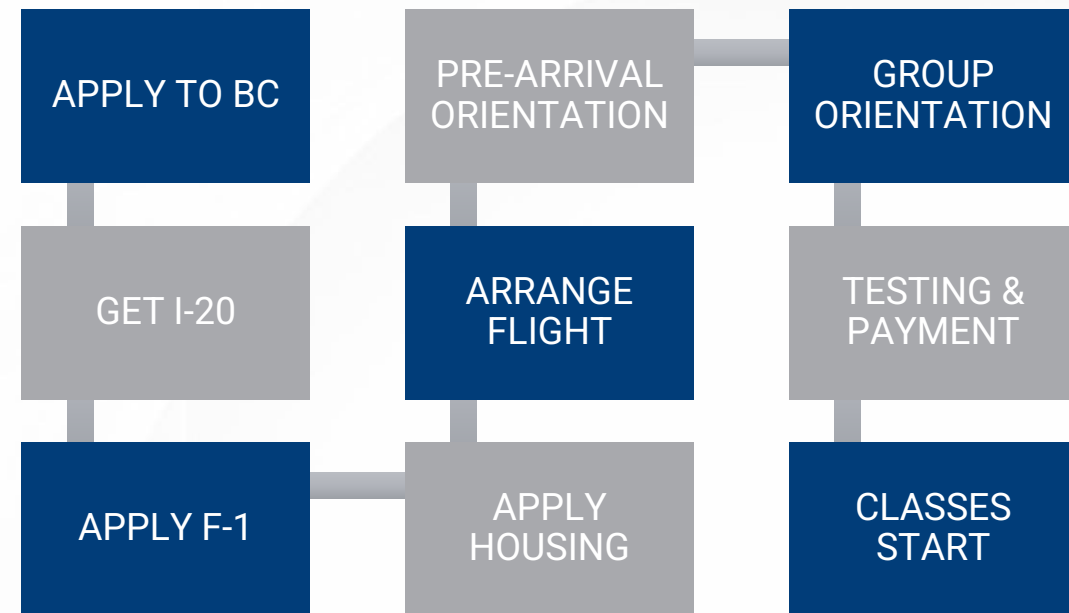
APPLICATION REQUIREMENTS & PROCESS

Accepts four times a year:

Fall (Sept.), Winter (Jan.) Spring (April), and Summer (July)

Requirements:

- Must be at least 16 years old
- Online Int'l Application Form
- Application & express mail fees
- Bank statement
- Transcript in English
- Copy of passport
- TOEFL 61 (58 for the Bridge Pathway), Duolingo 95, IELTS 6.0 (overall/5.5 min for each band)





BELLEVUE
COLLEGE