

# ALPADIA JUNIOR CAMPS 2022

## UK – CH – FR – DE

**MATTIAS YSEBIE**  
GLOBAL LANGUAGE CAMPS MANAGER - ALPADIA

**Webinar – Feb 17, 2022**

# WHERE ARE OUR YOUNG LEARNER CAMPS?

## UK

- Bath (EN)\* - KAPLAN
- Brighton (EN)
- London City (EN)
- Torquay (EN)\* - KAPLAN

## SWITZERLAND

- Engelberg (DE/EN)
- Leysin Juniors (FR/EN/DE)
- Leysin Teens (FR/EN/DE)
- Montreux (FR)\*

\*Host Family Accommodation



## FRANCE

- Biarritz (FR)
- Nice (FR)
- Paris Igny (FR)
- Paris Passy (FR/EN)

## GERMANY

- Berlin Wannsee (DE)
- Berlin Werbellinsee (DE/EN)
- Frankfurt Lahntal (DE)
- Freiburg (DE)

# WHAT DO WE OFFER?

## Individuals & Groups

- SPRING (April – May), SUMMER (June – August) & FALL (October) => from 1 week stay
- Sunday arrival / Saturday departure

## All Residence Accommodation; Montreux Riviera with HF Accommodation

- 24/7 Supervision -> Night Watch
- Staff to student ratio 1:15
- Rooming by age

## All-inclusive packages: course – meals – activities – excursions

## 3 x Optional PREMIUM+ Activities / location

## Free Application Fee for 2 (or more) students registering together



# JUNIOR COURSES: ENGLISH, FRENCH & GERMAN

**Morning\* lessons** (1 lesson = 45 minutes)

- Standard 20 (S20) & Intensive 25 (I25) Program
- 1-to-1 +5; combines with S20 ONLY, not I25
- 3 Levels: Beginners / Elementary – Intermediate – Advanced
- Classroom size: 15 max
- Classes by language level, not age
- End of course satisfaction survey
- End of course certificate

**Dual Language: Engelberg (DE/EN) – Leysin (FR/EN) – Berlin Werbellinsee (DE/EN)  
– Paris Passy (FR/EN)**

*\* Morning or afternoon lessons in London city & Brighton*



	SUNDAY	MONDAY	TUESDAY	WEDNESDAY	THURSDAY	FRIDAY	SATURDAY
Wake-up 7:00 / Breakfast 7:30							
08:30 - 12:30	 <b>Excursion to Cailler Chocolate Factory &amp; Gruyères or Aquaparc</b>	Classes	Classes	Classes	Classes	Classes & weekly test	Free time
Lunch 12:30 - 13:30							
14:00 - 18:00		 <b>Package activities</b>	 <b>Package activities</b> <b>OR</b> <b>PREMIUM +</b> 	 <b>Excursion to Bex Salt Mines</b>	 <b>Package activities</b> <b>OR</b> <b>PREMIUM +</b> 	 <b>Package activities</b> <b>OR</b> <b>PREMIUM +</b> 	 <b>Shopping &amp; sightseeing excursion in Lausanne</b>
Dinner 18:30 - 19:30							
20:00 - 22:00	Welcome party	Sports tournament	Talent Show	BQQ	Movie Night	Disco party	Free evening
Lights out 22:00							



# OPTIONAL PREMIUM+ ACTIVITIES

- Adrenalin
- Amusement Park
- City
- Cooking
- Creative Arts
- Fashion
- Horse Riding
- Stadiums
- Tennis
- Watersports

Organised on Tuesday, Thursday and Friday afternoon  
Amusement park on Sundays  
Harry Potter Warner @ Warner Bros studios on Saturday afternoon



# FREE TIME AUTHORISATION

## WHAT DOES IT MEAN?

- Student can be left unsupervised during pre-defined timeslots
- Students need to stay in small groups of 3 students
- Sometimes also called “Sortie Libre”
- Only available from 14 years old => no exception

## WHEN IS IT GRANTED?

- Mon – Fri : 17:00 – 18:00/18:30
- During excursions



# TRANSFERS

- Airport transfers
  - We welcome students at the arrival gate
  - We help students for the check-in and take them till the security checkpoint
  - Collective according to schedule – Arrival on Sunday – Departure on Saturday – 9:00 to 16:00
    - Duo pack = 20% discount for 2 students traveling together
    - Trio pack = 30% discount for 3 students traveling together
  - Extra fee for outside of schedule
  - Private transfer (duo and trio pack applicable)
  - UM service
- Train station transfers
- Accompanied train transfer from Switzerland to Frankfurt-Lahntal (DE)
- Accompanied bus transfer in Switzerland to and from Swiss camps





**WHERE CAN YOU FIND SPECIFIC CAMP  
INFORMATION?**

**=> CENTRE GUIDES ([WWW.ALPADIA.COM](http://WWW.ALPADIA.COM))**


**Factsheet**


<b>Language camp</b>	English
<b>Language</b>	English
<b>Age</b>	10-17
<b>Max. students/class</b>	15
<b>Year of foundation</b>	2018
<b>Staff Recruitment ratio</b>	Teachers 1:15 Activity leaders 1:15

**Addresses**

**Reception & campus** Roedean School  
Roedean Way, Brighton BN2 5RQ

**Telephone**

**Emergency 24/7** +44 (0) 7799 916 580

**Dates**

**2022** 03.07-09.07 / 10.07-16.07 / 17.07-23.07 /  
24.07-30.07 / 31.07-06.08 / 07.08-13.08.2022

**Courses (45 minutes lessons)**

<b>Standard</b>	20 lessons per week / 08.30 - 11.45
<b>Intensive</b>	25 lessons per week / 11.45 - 12.30
<b>Private</b>	5 lessons per week / 11.45 - 12.30

**Currency**

**Pounds sterling £** Pocket money service

**Accommodation**

**Single, twin or triple** Shared bathroom & toilet

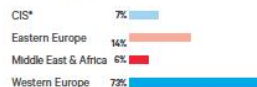
**Transfers in £**

[View PDF Pricelist](#)

<b>✈ London Heathrow LHR</b>	from 90 one-way
<b>✈ London Gatwick LGW</b>	from 60 one-way
<b>🚗 London St. Pancras</b>	from 170 one-way

**How to get there**

<b>Car</b>	<a href="#">Click here to use Google maps</a>
<b>Train</b>	Closest station is "Brighton"

**Nationality Mix**


\*Commonwealth of Independent States


**Camp highlights**

- ✓ Beautiful seaside location just east of Brighton
- ✓ Located in a magnificent national park in southern England
- ✓ Newly refurbished Victorian residence with single, twin or triple bedrooms and shared bathrooms
- ✓ Generous outdoor sports grounds and indoor hall
- ✓ Bright and spacious classrooms for interactive learning
- ✓ Free WiFi available throughout the campus

**Destination highlights**

- ✓ Attractive and flamboyant seaside city with an eclectic atmosphere
- ✓ Iconic beach promenades and plenty of boutiques
- ✓ Fantastic sports, creative and cultural activities
- ✓ Great selection of places to visit and things to see
- ✓ Fantastic opportunities for shopping and sightseeing
- ✓ Rich choice of excursions and entertainment

**Accreditations & certifications**




### Facilities

- ✓ Recently refurbished and attractive single, twin or triple bedrooms
- ✓ Desk, wardrobe, chair & lamp in rooms
- ✓ Lockable drawers in the bedroom
- ✓ Shared bathroom & toilet – 1 bathroom & 1 toilet for every 4 students
- ✓ Common lounge area
- ✓ Bedsheets provided and changed weekly
- ✓ Free WiFi throughout the college campus
- ✓ Bright spacious classrooms
- ✓ Generous outdoor sports fields, indoor sports hall and on campus swimming pool
- ✓ Top location right by the sea on a secure campus

### Services

- ✓ **Pocket money**  
Camp managers keep student's money in a safe. Students can withdraw their money once daily.
- ✓ **Free weekly room & bathroom cleaning**
- ✓ **Free laundry service**  
Washing is organised for all students and done each weekend.
- ✓ **Day camp**  
Students who already have accommodation can participate in the language courses, activities and excursions.

### Practical information

- Check-in Sunday: from 14:00 – 16:30  
Reception in main entrance of Rodean School  
Check-out Saturday: from 09:00 – 11:30
- Minimum stay one week
- **£60 deposit to be paid in cash upon arrival**  
It is refunded on departure day provided no damage has been caused and the room key is returned.
- Walking between campus buildings  
There are several different buildings on the secure school grounds. It is a 3-minute walk from the residence to the classrooms & dining hall and sports grounds.

### Free time

- ✓ Parents need to sign the parental consent form in order for students to leave the camp at specific time slots or have free time on excursions.
- ✓ Students are not allowed to leave the camp in the evening or during the night.
- ✓ Students under 14 years old are not allowed to leave the camp alone at any time.
- ✓ Free time is available between the afternoon activity and dinner, Saturday morning, and during some excursions.

### PREMIUM +

### Creative Arts

#### Programme

- Street art: graffiti & body art
- Basic painting techniques; 3D art
- Development and design of a personalised T-shirt & a collective piece of art
- Self portrait

The instructor will plan a diverse programme of min. 3 weeks. Students who choose this activity for 3 weeks will therefore have different activities from one week to the next.

#### Materials

- All materials are supplied
- Students should bring clothes that can get dirty

**Location** ..... At college campus

**Timing** ..... Tuesday, Thursday & Friday afternoons  
14:00 – 17:00

**Price** ..... **£100 per week**

### PREMIUM +

### Watersports

#### Programme

- Paddle Boarding
- Raft Building
- Wakeboarding

#### Materials

Students need to bring a sweater, rain jacket, swim suit, a towel, sunscreen & shoes that can get wet

#### Location

Brighton Lagoon

15 minute drive from the campus

**Timing** ..... Tuesday, Thursday & Friday afternoons  
14:00 – 17:00

**Price** ..... **£120 per week**

### PREMIUM +

### Horse Riding

#### Programme

- Lessons for beginners and experienced riders
- Students will be split up by level
- Advanced riders will be riding outside in nature
- Students will ride for 60 minutes per afternoon

#### Materials

The horse riding club will provide a helmet, but students can bring their own. Students should wear solid or sports shoes, trousers and should bring a rain jacket

**Location** ..... Equestrian Centre  
30 minute drive from campus

**Timing** ..... Tuesday, Thursday & Friday afternoons  
14:00 – 17:00

**Price** ..... **£150 per week**



LANGUAGE CAMPS / AGE 10-17  
*Alpadia Brighton*

**WEEK 1** 03.07-09.07.2022

	SUNDAY	MONDAY	TUESDAY	WEDNESDAY	THURSDAY	FRIDAY	SATURDAY
	Wake-up 7:00 / Breakfast 7:00						
08:00 - 12:00		CLASSES	CLASSES	CLASSES	CLASSES	CLASSES + WEEKLY TEST	DEPARTURES OR HALF-DAY EXCURSION
14:00 - 18:00	ARRIVAL & WELCOMING OF NEW STUDENTS	MULTISPORTS	MULTISPORTS OR 	VISIT TO SEA LIFE BRIGHTON  Lunch 12:30 - 13:30	MULTISPORTS OR 	MULTISPORTS OR 	VISIT TO BRIGHTON CITY CENTRE SHOPPING IN NORTH LANE  Dinner 18:30 - 19:30
20:00 - 22:00	ICE BREAKER	EGG PROTECTOR	QUIZ NIGHT	GAMES NIGHT	NEWSPAPER FASHION SHOW	KARAOKE/DISCO	FLM NIGHT
	Lights out: 22:30						

**WEEK 2** 10.07-16.07.2022

	SUNDAY	MONDAY	TUESDAY	WEDNESDAY	THURSDAY	FRIDAY	SATURDAY
	Wake-up 7:00 / Breakfast 7:00						
08:00 - 12:00		CLASSES	CLASSES	CLASSES	CLASSES	CLASSES + WEEKLY TEST	DEPARTURES OR HALF-DAY EXCURSION
14:00 - 18:00	ARRIVAL OF NEW STUDENTS	MULTISPORTS	MULTISPORTS OR 	VISIT TO BRIGHTON BEACH & PIER ROYAL PAVILION  Lunch 12:30 - 13:30	MULTISPORTS OR 	MULTISPORTS OR 	VISIT TO BRIGHTON MUSEUM & ART GALLERY & SHOPPING
20:00 - 22:00	ICE BREAKER	MURDER MYSTERY NIGHT	FANCY DRESS DISCO	TALENT CONTEST	CASINO NIGHT	KARAOKE/DISCO	FLM NIGHT
	Lights out: 22:30						

**WEEK 3** 17.07-23.07.2022

	SUNDAY	MONDAY	TUESDAY	WEDNESDAY	THURSDAY	FRIDAY	SATURDAY
	Wake-up 7:00 / Breakfast 7:00						
08:00 - 12:00		CLASSES	CLASSES	CLASSES	CLASSES	CLASSES + WEEKLY TEST	DEPARTURES OR HALF-DAY EXCURSION
14:00 - 18:00	ARRIVAL OF NEW STUDENTS	MULTISPORTS	MULTISPORTS OR 	VISIT TO BRIGHTON ADMIRALS DRAG TOWER  Lunch 12:30 - 13:30	MULTISPORTS OR 	MULTISPORTS OR 	VISIT TO BRIGHTON BEACH & PIER ROYAL PAVILION  Dinner 18:30 - 19:30
20:00 - 22:00	ICE BREAKER	TEAM CHALLENGES	QUIZ NIGHT	FANCY DRESS COMPETITION	GAMES NIGHT	KARAOKE/DISCO	FLM NIGHT
	Lights out: 22:30						

**MULTISPORTS:** Includes activities such as football, street hockey, swimming, table tennis, basketball, volleyball, handball, baseball, dodgeball, beach games, orienteering, cricket, mtsbee etc.

Times are approximate and may vary from week to week. Free time activities may include doing laundry, studying, contacting family, socialising etc. Entrance is not included to all of the mentioned attractions. Please note that all schedules and activities are subject to change – in the event of force majeure, i.e. in case of bad weather conditions, insufficient number of participants or unavailability of the provider.



LANGUAGE CAMPS / AGE 10-17  
*Alpadia Brighton*

	SUNDAY	MONDAY	TUESDAY	WEDNESDAY	THURSDAY	FRIDAY	SATURDAY
BREAKFAST	CONTINENTAL BREAKFAST						
LUNCH	PACKED LUNCH SANDWICH CRISPS DRINK BISCUIT	CHICKEN KATSU OR SESAME TOFU STEAMED RICE SWEET CORN BAKED BEANS	BEEF STROGANOFF OR VEGETABLE PASTA BAKE PENNE PASTA CARROT BATONS BAKED BEANS	CHILLI CON CARNE OR VEGETABLE BEAN (CHILI) STICKY RICE VEGETABLE MEDLE	CHICKEN CHASSEUR OR QUORN RAGU NEW POTATOES STEAMED CABBAGE BAKED BEANS	BREADED COD VEGETABLE SPRING ROLL CHIPS MUSHY PEAS BAKED BEANS	PACKED LUNCH SANDWICH CRISPS DRINK BISCUIT
DINNER	JACKET POTATO BAR CARLIC BREAD SELECTION OF SALADS SELECTION OF BREADS SELECTION OF DESSERTS	SOUP OF THE DAY LAMB KEBAB OR ROASTED VEGETABLE KEBAB SIDE DISHES PITTA BREAD CHEEK SALAD SELECTION OF BREADS SALAD BAR	SOUP OF THE DAY CHICKEN OR VEGETABLE CHOW MEIN SIDE DISHES PRAWN CRACKERS SPRING ROLLS JACKET POTATO SELECTION OF BREADS SALAD BAR SELECTION OF DESSERTS	SOUP OF THE DAY STICKY RICE SIDE DISHES SPAGHETTI CARLIC BREAD SELECTION OF BREADS SALAD BAR SELECTION OF DESSERTS	SOUP OF THE DAY BOLOGNESE OR VEGETABLE PASTA BAKE SIDE DISHES SPAGHETTI CARLIC BREAD SELECTION OF BREADS SALAD BAR SELECTION OF DESSERTS	THAI GREEN VEGETABLE CURRY ROLL STEAMED RICE PEAS & CARROTS JACKET POTATO SELECTION OF BREADS SALAD BAR SELECTION OF DESSERTS	JACKET POTATO BAR CARLIC BREAD SELECTION OF BREADS SALAD BAR SELECTION OF DESSERTS

**SPECIAL OPTIONS**

**IF COMMUNICATED LATEST 2 WEEKS IN ADVANCE, THE FOLLOWING MENUS ARE POSSIBLE**  
GLUTEN INTOLERANT AND/OR LACTOSE FREE  
VEGETARIAN OR VEGAN  
HALAL  
\*\*\*SOME DISHES MAY CONTAIN NUTS OR TRACES OF NUTS AND/OR OTHER ALLERGENS\*\*

These are sample menus and may be modified at any time by the accommodation partner. Please communicate any special meal requests at least 2 weeks in advance. **All allergies and food intolerances should be communicated at the time of enrolment. Please take note that it is impossible to guarantee that any meal will be 100% allergen-free.**

All images, text, logos and graphics belong to Alpadia Language Schools © 2016-2022 - All rights reserved.



# ALPADIA CH camps

Engelberg, Leysin & Montreux-Riviera

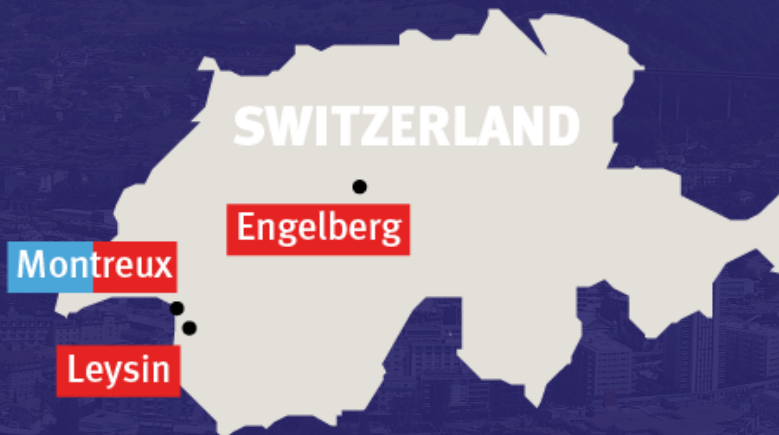
# ALPADIA IN SWITZERLAND

3 Summer camps | 1 Spring Camp | 1 Fall Camp

Engelberg (DE/EN) :  

Leysin (DE/EN/FR) :  

Montreux (FR/EN) :  



KEY:

 Summer camp

 Small City

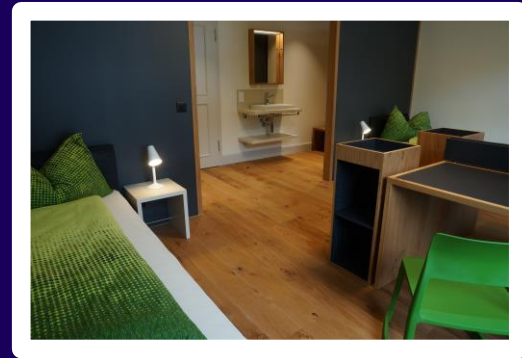
 Big City

# SWITZERLAND

## Engelberg (10-17 / EN-DE) – single & twin rooms

### DESTINATION HIGHLIGHTS:

- Stunning Swiss resort at an altitude of 1'000m resort in a Swiss private school
- Renovated 12th century Benedictine monastery
- Plenty of outdoor & indoor sports areas
- Excursions to Luzern, Bern, Interlaken and Zurich
- Premium+ Activities: Adrenalin (*Mountain Biking, Via Ferrata, Adventure Park*), Creative Arts, Tennis



# SWITZERLAND

Leysin (8-17 / FR-EN) – Summer

Leysin (8-17 / FR-DE-EN) – Fall & Spring

## DESTINATION HIGHLIGHTS:

- Wonderful mountain resort at 1'263 m altitude, a 3-star hotel with all classrooms, accommodation and dining under one roof
- Plenty of game areas and communal areas for students
- Attractive alpine-style quadruple bedrooms with private bathroom and balcony
- Premium+ Activities: Adrenalin (*tobogganning, dirt scoot, mountain biking*), Cooking, Creative Arts, Horse Riding & Tennis





# SWITZERLAND

## Montreux Riviera (13-17 / FR) – single & twin rooms – Host Family Accommodation

### DESTINATION HIGHLIGHTS:

- Wonderful location on the Swiss Riviera on Lake Geneva
- Ultimate immersion experience with students staying with local host families around Montreux
- Quality infrastructure on-site and around the camp
- Cafeteria & dining hall for midweek lunch meals
- Premium+ Activities: Adrenalin (*lasershooting, horror escape room, adventure rope park*), Creative Arts, Watersports (*sailing, stand-up paddle, waterskiing*)









# ALPADIA FR Summer camps

**Biarritz, Nice & Paris Passy**

# ALPADIA IN FRANCE

## 4 Summer camps

Biarritz (FR):   

Nice (FR):   

Paris Igny (FR) – groups only:  

Paris Passy (FR/EN):  

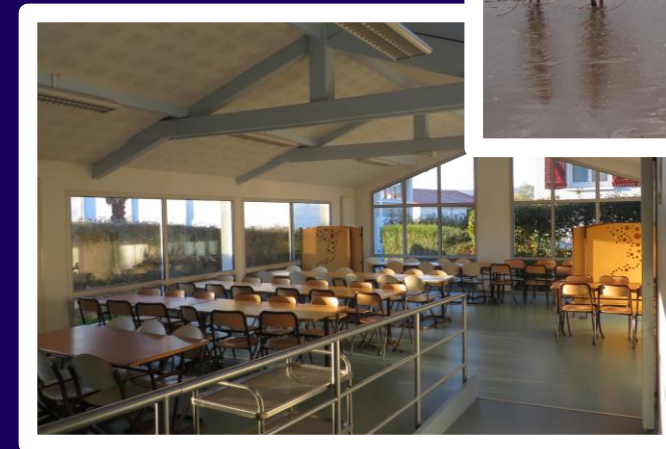
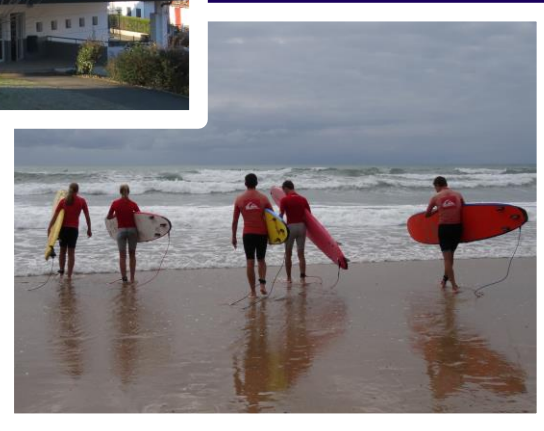


# FRANCE

## Biarritz (13-17 –FR) – Triple rooms

### DESTINATION HIGHLIGHTS:

- Modern and attractive location in the Basque region, Saint-Pée-sur-Nivelle (13 kms from Biarritz)
- A beautiful nature-rich environment at the foot of the Pyrenees; mountains to sunny beaches
- Plenty of outdoor activities in the surrounding areas
- Great opportunity for surfing in the Atlantic Ocean
- Premium+ Activities: Cooking, Horse-Riding, Watersports (*surfing*)

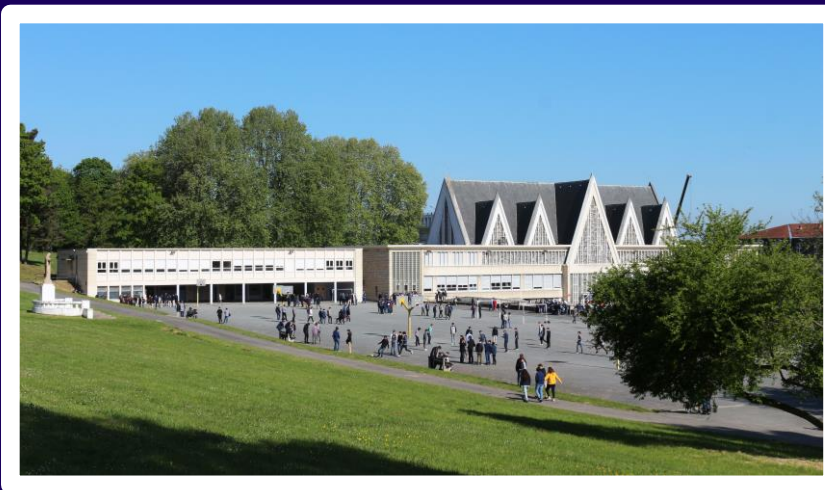


# FRANCE

## Paris Passy (13-17 – EN/FR) – Single rooms

### DESTINATION HIGHLIGHTS:

- Beautiful lush green summer camp located 45 min from Paris' city centre
- Plenty of games and communal areas
- Classrooms furnished with modern equipment
- Premium+ Activities: Amusement Park (*Disneyland Paris*), City (*guided bus tour, Grévin Museum and tour on the Bateaux-Mouches*), Stadiums (*Stade de France & Parc des Princes*)







# ALPADIA DE Summer camps

Berlin Wannsee, Berlin Werbellinsee, Frankfurt-Lahntal & Freiburg

# ALPADIA IN GERMANY

4 Summer camps

Berlin Wannsee (DE):  

Berlin Werbellinsee (DE/EN):  

Frankfurt Lahntal (DE):  

Freiburg (DE):  

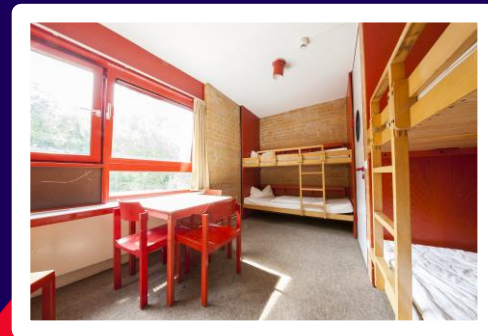
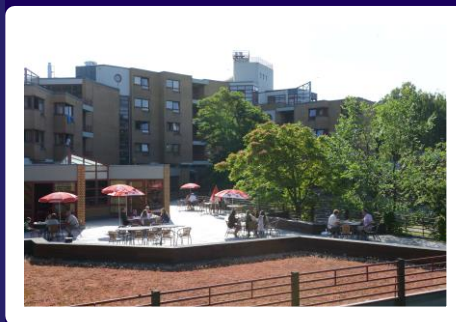
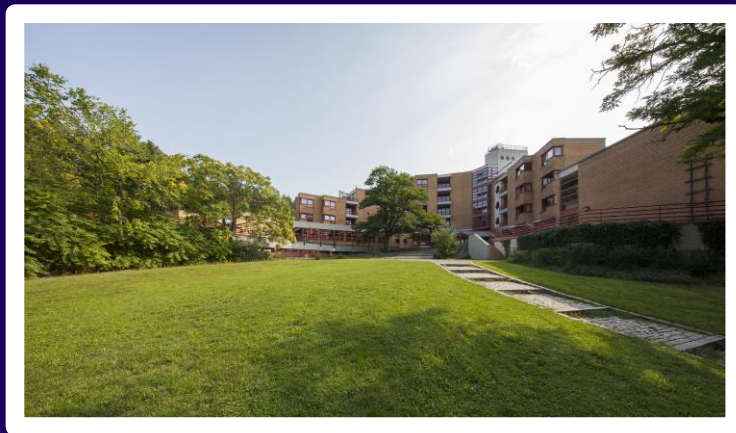


# GERMANY

## Berlin Wannsee (13-17 / DE) – Quadruple rooms

### DESTINATION HIGHLIGHTS:

- Fantastic lakeside location, Lake Wannsee, only 45 minutes from Berlin's city centre
- Great outdoor spaces and private beach
- Kiosk and plenty of games available for students
- Visit to Berlin every afternoon
- Premium+ Activities: City (*Berlin Madame Tussaud's wax museum, Fernsehturm and Berliner Escape room challenge*), Creative Arts, Tennis





# GERMANY

## Berlin Werbellinsee (10-17 / EN-DE) - En-suite triple rooms

### DESTINATION HIGHLIGHTS:

- Beautiful lakeside location in Schorheide National Park, an UNESCO protected natural reserve 60 km north of Berlin
- Numerous outdoor sports grounds and private beach
- Local amenities and shops found on camp grounds
- Excursions to Berlin during the weekend
- Premium+ Activities: Creative Arts, Horse Riding, Watersports (*Waterskiing, Stand-up paddle boarding, Sailing, Rowing*)

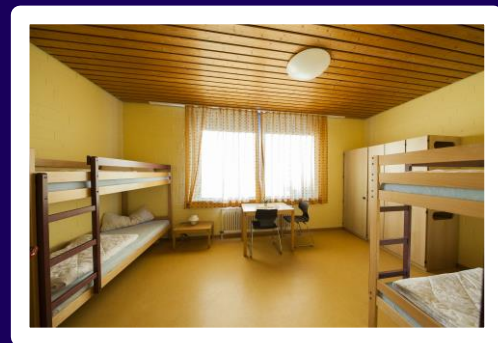


# GERMANY

## Frankfurt Lahntal (10-17 / DE) – Quadruple rooms

### DESTINATION HIGHLIGHTS:

- Wonderful location in the Lahn Valley 120 km from Frankfurt
- Located within a calm, densely forested region with local rivers, close to neighbouring mountains
- Quaint medieval town with plenty of typical architecture
- Great opportunities for shopping & sightseeing in Frankfurt, Cologne & Marburg
- Numerous outdoor sports grounds and games areas
- Premium+ Activities: Creative Arts, Horse Riding, Tennis

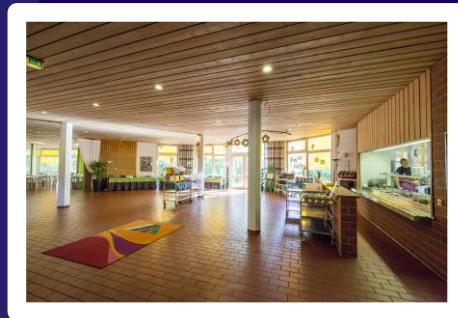


# GERMANY

## Freiburg (13-17 / DE) – En-suite quadruple rooms

### DESTINATION HIGHLIGHTS:

- Great situation nestled in the forest 20 minutes from the city centre of Freiburg, one of the greenest and ecological cities in Germany
- Close to a large sports centre with plenty of indoor and outdoor activities
- Sunniest region in Germany
- Premium+ Activities: Adrenalin (*Mountain biking*), Amusement Park (*Europa-Park*), Tennis





# ALPADIA UK Summer camps

**Brighton & London city**

# Kaplan & ALPADIA in the UK

4 Summer camps



## UK

Bath:  

Brighton:   

London city:  

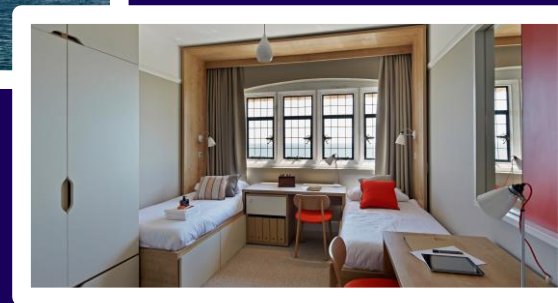
Torquay:   

# UK

## Brighton (10-17 - EN) – single, double & triple rooms

### DESTINATION HIGHLIGHTS:

- Beautiful seaside location just east of Brighton
- Newly refurbished Victorian residence
- Generous outdoor sports fields, including indoor swimming pool
- Excursion to London every Sunday
- Premium activities: Creative Arts, Horse Riding, Watersports (*Windsurfing, Raft Building/Racing, Wakeboarding*)

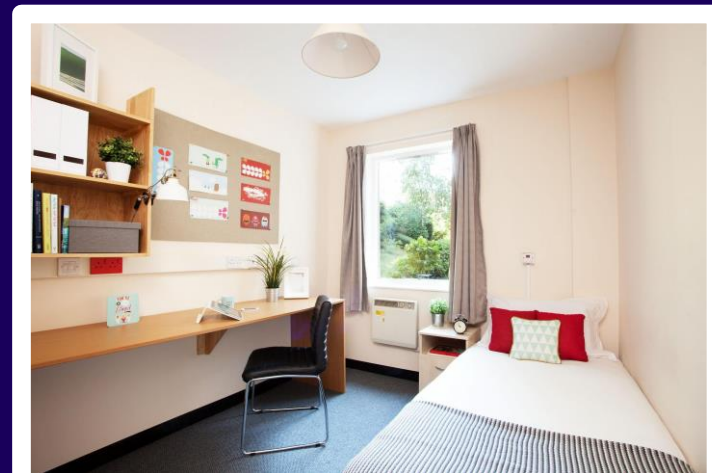


# UK

## London City (13-17) – En-suite single rooms

### DESTINATION HIGHLIGHTS:

- Fantastic central location in London Zone 2 - New Cross
- Goldsmith University campus
- Courtyard with BBQ & indoor lounge area
- Modern indoor multisports hall
- Visit to London every day
- Excursions to Brighton, Cambridge & Oxford
- Premium activities: City (*London Eye, Harry Potter @ Warner Bros Studios and Madame Tussaud's*), Fashion , Stadiums (*Wembley Stadium, Emirates Stadium, Stamford Bridge Stadium*)





# Kaplan UK JUNIOR HOMESTAY Summer camps

**Bath and Torquay**

**Mark Lloyd – REGIONAL PRINCIPAL**



## Individuals & Groups

- For students aged 12-17
- June 12 – August 13 / From 1 week stay
- Homestay accommodation in twin rooms (with shared bathrooms)
- ‘Day Camp’ options and option to split junior and adult family groups



# Kaplan in the UK

Summer Camps



# UK

## Bath (12-17 | EN)

### DESTINATION HIGHLIGHTS:

- England's only World Heritage City
- 2,000 years' experience of welcoming and caring for visitors
- Rich cultural heritage with Roman ruins and exceptional Georgian architecture
- Fabulous museums including the Roman Baths Museum, the Jane Austen Centre, Mary Shelley's House of Frankenstein, and the Royal Crescent Museum
- City-centre school location with a wide range of shops and sights all within two minutes' walk
- Permanent year-round school only 5 minutes away
- Wide selection of sports, creative and cultural activities

Recommended airport: London Heathrow (LHR)

Recommended train station: Bath



# UK

## Bath (12-17 | EN)

### Typical Excursions:

- Full day: London / Oxford / Salisbury & Stonehenge / Windsor
- Half day: Bristol / Cheddar / Berkeley Castle

### Typical Activities:

- Roman Baths Museum
- Royal Crescent Museum
- Boating
- Bowling
- Outdoor games
- Instagram competition / Murder mystery / Walking trails







# UK

## Torquay (12-17 | EN)

### DESTINATION HIGHLIGHTS:

- Charming seaside location at the heart of the English Riviera
- Stunning coastal scenery
- School in a hillside location with garden, outdoor terrace, and panoramic sea views
- Permanent year-round school only 5 minutes away
- Well-equipped games room
- Wide selection of sports, creative and cultural activities

Recommended airport: London Heathrow (LHR)

Recommended train station: Torquay



# UK

## Torquay (12-17 | EN)

### Typical Excursions:

- Full day: Plymouth / Exeter / Dartmouth
- Half day: Paignton Zoo / Torre Abbey / Kents Cavern

### Typical Activities:

- Riviera Wheel
- Water sports
- Bowling
- Quasar
- Outdoor/beach games
- Instagram competition / Murder mystery / Walking trails









# Classroom lessons

- Monday – Friday 0900-1230 or 1330-1700
- Innovative project-based curriculum which focuses on activating, consolidating, and expanding the language knowledge students already have while developing their core life skills!

## What are the core life skills developed by the syllabus?

*Communication*

*Creative Thinking*

*Collaboration*

*Critical Thinking*

*Social Responsibility*

*Learning to Learn*

- Daily ‘Local Link’ sections



Communication

Using appropriate language and register for context

Managing conversations

Participating with appropriate confidence and clarity

Collaboration

Taking personal responsibility for own contribution to a group task

Listening respectfully and responding constructively to others' contributions

Managing the sharing of tasks in a project

Working towards a resolution related to a task

Social Responsibilities

Understanding personal responsibilities as part of a group and in society – including citizenship

Taking active roles including leadership

Understanding and describing own and others' cultures

Understanding and discussing global issues – environmental, political, financial and social



Creative  
Thinking

Participating in  
creative activities

Creating new  
content from own  
ideas or other  
resources

Using newly  
created content to  
solve problems and  
make decisions

Critical  
Thinking

Understanding  
and analysing links  
between ideas

Evaluating ideas,  
arguments and  
options

Synthesising ideas  
and information

Learning to  
Learn

Practical skills for  
participating in  
learning

Taking control of  
own learning

Reflecting on and  
evaluating own  
learning success



# What does a project look like?



# What does a project look like?



# What does a project look like?





## What is the 'Local Link'?

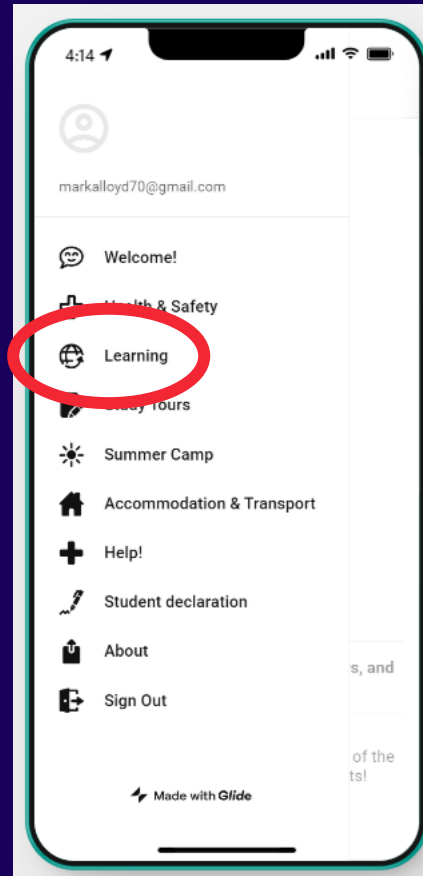
- Local Link sessions focus on helping students to identify and make use of learning and practice opportunities outside the classroom
- **Mobile app** with sections specifically designed to support student learning outside the classroom:

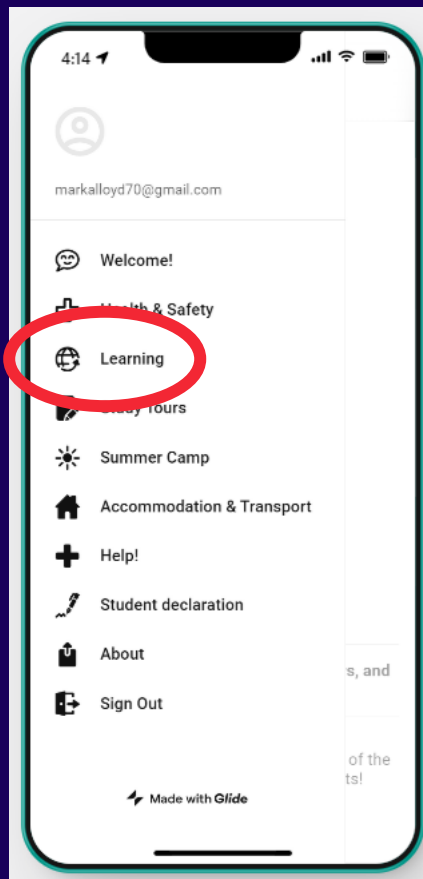
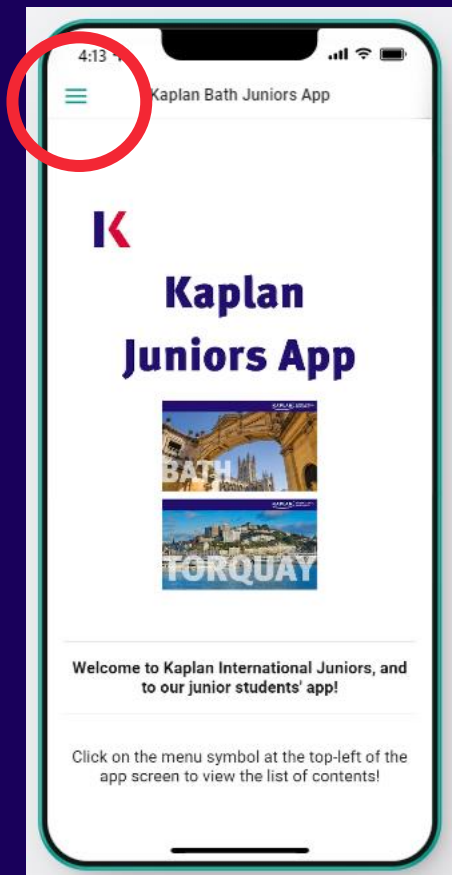


<https://kaplanjuniors.glideapp.io/>









You can find links to the mobile apps here: .

[Click to view the In & Around Bath app](#)

[Click to view the In & Around Torquay app](#)

[Click to view the Towns & Cities app](#)

[Click to view the Events & Activities app](#)



# 'My English Portfolio'



▶ **USEFUL INFORMATION**



**Homestay Host / Residence**

Name: \_\_\_\_\_

Address: \_\_\_\_\_

Telephone number: \_\_\_\_\_



**Group Leader**

Name: \_\_\_\_\_

Telephone number: \_\_\_\_\_



**School**

Address: \_\_\_\_\_

Telephone number: \_\_\_\_\_



**Other Numbers**

Taxi: \_\_\_\_\_

Others: \_\_\_\_\_



2

of 54



## ► LIFE IN THE CLASSROOM

Read the words below and write them in the correct category.



Now add two more words to each category.



## ▶ PERSONAL SAFETY

Look at the following advice about your personal safety. Tick whether you agree or disagree with each statement.

### You should .

	YES	NO
never walk around alone at night.	<input type="radio"/>	<input type="radio"/>
bring lots of money to school.	<input type="radio"/>	<input type="radio"/>
drive on the right in the UK.	<input type="radio"/>	<input type="radio"/>
leave your bag unattended in public places.	<input type="radio"/>	<input type="radio"/>
always tell someone where you are going.	<input type="radio"/>	<input type="radio"/>
dial 999 if you lose your passport.	<input type="radio"/>	<input type="radio"/>
accept lifts from strangers if they offer.	<input type="radio"/>	<input type="radio"/>
keep expensive possessions out of sight.	<input type="radio"/>	<input type="radio"/>
only cross roads at pedestrian crossings.	<input type="radio"/>	<input type="radio"/>
not use illegal drugs.	<input type="radio"/>	<input type="radio"/>
run up and down stairs.	<input type="radio"/>	<input type="radio"/>
tell school staff or your homestay host if you feel ill.	<input type="radio"/>	<input type="radio"/>
obey curfew times.	<input type="radio"/>	<input type="radio"/>
keep the school emergency number with you at all times.	<input type="radio"/>	<input type="radio"/>





## ▶ USEFUL PHRASES

### ...meet people

- Hi, I'm...
- I'm from...(Spain / Tokyo)
- Where are you from?
- Where exactly?
- How old are you?
- Have you been to England before?
- Are you here with a group?
- Where are you staying?
- Are you...(going on the excursion to London / going to the disco tonight / going to come shopping with us / going to come to the park)?
- What kinds of things do you like doing?
- Do you have...(WhatsApp / Twitter / Instagram)?
- Which class are you in?
- Who is your teacher?

### ...discuss permission and rules

- (Am I / Are we)...allowed to...(sit / wait)... here?
- Is it OK if...(I sit here / I open the window)?
- Excuse me, do you mind if...(we sit here / I open the window)?
- Excuse me, would you mind if...(my friend came to visit me / I arrived home a bit later this evening)?
- Please...(close the windows / lock the door)...when you leave.
- Please don't...(be late / leave a mess / make too much noise).
- No...(smoking / shouting / litter / loud music / ball games / talking).
- You're not allowed to...(smoke / play loud music / play ball games).

### ...buy things

- Excuse me, could you tell me where...(the bread / the pasta / the pharmacy section)... is, please?
- Excuse me, I can't find...(the coffee / the eggs / the frozen food).
- Excuse me, how much is...(is this / are these)...please?
- Excuse me, ... (is this / are these)... included in the sale?
- Excuse me, do you have...(this / these)...in a ... (bigger / smaller)... size?
- Sorry, I don't understand. Could you speak more slowly please, or write it down?
- Can I have...(a cheese / ham / tuna)... (baguette / wrap)...please?
- Can I have...(a Coke / mineral water / cappuccino)...please?
- Can we have the bill, please?

### ...travel around

- Excuse me, can you tell me the way to...(the coach park / the bus station)?
- Excuse me, I'm trying to find...(a post box / a shop to buy water). Is there one near here?
- Excuse me, is...(the hospital / the bus station)...near here?
- Excuse me, I'm looking for...(a coffee shop / a cash machine). Can you help me?
- Excuse me, what's the best way to (the bus station / the city centre)?
- Could you help me, please? I'm looking for...(a cash machine / the bus station).
- Excuse me, can you give me directions to the nearest...(bus stop / police station)?
- Excuse me, where can I find the nearest...(coffee shop / bus stop)?
- Would you mind telling me where...(the sports centre / the park)...is, please?
- Excuse me, does this bus go to...(the city centre / ...)?
- Sorry to bother you, but is this the right way to...(the city centre / the bus station)?
- Can I have a...(single / return) to...(the city centre / London)...please?
- Excuse me, how much is a...(single / return)...to (Oxford / Bristol / the city centre)...please?

► **WEEKLY REVIEW**

**WEEK**

1

2

3

4

5

6

7

8

9

10

My new language



My learning this week



My action plan



## Safety

- Supervision ratio = 1 : 15
- Curfews:
  - 12-13: 2130 if supervised
  - 14-17: 2230
- All homestay hosts are within 30 minutes of the schools
- Students travel in pairs or small groups
- Under-14s are accompanied home after evening activities



# Express for Young Learners

- Our online course for students aged 12-15
- Perfect preparation for a UK summer course!
- Two lessons per week (60 minutes each)
- Six-week modules (12 lessons per module)
- Tuesdays and Thursdays 1800-1900 (UK time)
- €110 per module
- Next start dates: April 5 and May 17





INTERNATIONAL  
LANGUAGES



**ALPADIA**  
LANGUAGE SCHOOLS  
by Kaplan International

THANK  
YOU!