



KAPLAN INTERNATIONAL  
LANGUAGES

# Canadian Pathways and UPS Webinar

PART 1

Eris Brake and Safa Siddiqi

[eris.brake@kaplan.com](mailto:eris.brake@kaplan.com)  
[safa.siddiqi@kaplan.com](mailto:safa.siddiqi@kaplan.com)





# AGENDA

## Pathways in Canada

We will be sharing  
what makes pathways  
in Canada unique.

## EAP

We will explain what  
the English for  
Academic Pathways  
program is and what it  
it entails.

## UPS

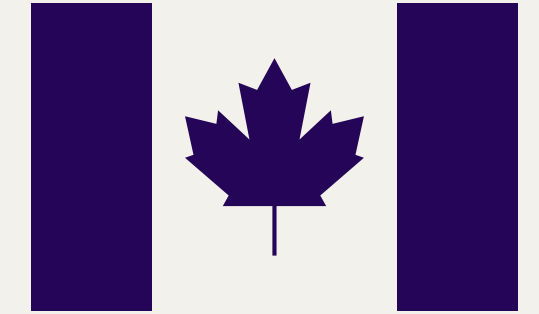
We will provide  
details on the  
University  
Placement Service.

## UPDATE: New Enhanced Partners

We will be sharing  
exciting news about  
Part 1 of our brand new  
enhanced partnerships.



# K Pathways in Canada



## DIRECT TRANSFER

Students who study at Kaplan can use their English level and EAP certificate toward direct transfer to our post-secondary partner schools in lieu of a TOEFL or IELTS score.



## WORKING WHILE STUDYING

In many countries, international students cannot work. This isn't the case in Canada. International students can work up to 20 hours per week while studying in a full-time program, and 40 hours during semester breaks.



## QUALITY EDUCATION

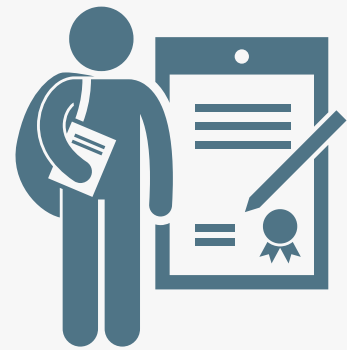
Canada's well-funded, internationally-renowned post-secondary institutions attract top professors and offer courses tailored to a changing economy.



## IMMIGRATION

Canada's Express Entry immigration system offers bonus points to people with Canadian study and work experience, with further emphasis on language, skills, and age. **Canada's immigration target is VERY high for the next 3 years: 1.2 million by the end of 2023.**

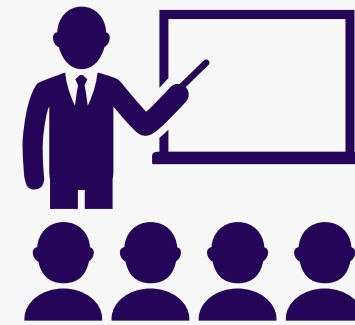
# ENGLISH FOR ACADEMIC PATHWAYS



## EAP COURSE

---

- Any student who plans to use our pathway must be enrolled in this course
- Serves as an indication to school staff to meet with the student and provide extra support



## EAP SPECIFIC SKILLS CLASS

---

- Designed to equip students with the skills and knowledge to successfully study post-secondary education in Canada
- 5 to maximum 20 weeks long
- B2+ can join the class
- Must take class for a minimum 5 weeks to qualify for our pathways



## EAP CERTIFICATE

---

- To transfer to one of our college or university partners, this certificate is needed with the English level required by the partner





ENTRY LEVEL	ELEMENTARY	LOWER INTERMEDIATE	INTERMEDIATE	HIGHER INTERMEDIATE	ADVANCED
LENGTH OF STUDY IN WEEKS (INTENSIVE ENGLISH)*	A1 TOEFL® 0-12	A2 TOEFL® 13-36 IELTS 3.5-4.0	B1 TOEFL® 37-54 IELTS 4.5-5.0	B2 TOEFL® 55-74 IELTS 5.5-6.0	C1 TOEFL® 75-91 IELTS 6.5-7.0
50 WEEKS	General English + Specific Skills class	General English + Specific Skills class	General English + Specific Skills class or IELTS Intensive	General English + EAP Specific Skills class or IELTS/ TOEFL Intensive	General English + EAP Specific Skills class or IELTS/ TOEFL Intensive
40 WEEKS		General English + Specific Skills class	General English + Specific Skills class or IELTS Intensive	General English + EAP Specific Skills class or IELTS/ TOEFL Intensive	General English + EAP Specific Skills class or IELTS/ TOEFL Intensive
30 WEEKS			General English + Specific Skills class or IELTS Intensive	General English + EAP Specific Skills class or IELTS/ TOEFL Intensive	General English + EAP Specific Skills class or IELTS/ TOEFL Intensive
20 WEEKS				General English + EAP Specific Skills class or IELTS/ TOEFL Intensive	General English + EAP Specific Skills class or IELTS/ TOEFL Intensive
10 WEEKS					General English + EAP Specific Skills class or IELTS/ TOEFL Intensive

# Certificate OF ACHIEVEMENT

This is to certify that

**First name / Last name**

has completed the

**English for Academic Pathways Program**

from xxx to xxx  
Lessons per week: 28 lessons/26.25hr

at **KI Toronto**

English Level Completed: Advanced/C1  
Current Level: Proficiency/C2  
Attendance: 85.00%

School Director/Academic Manager  
January-16-18

UK

ENGLISHUK

Accredited by the  
BRITISH  
COUNCIL  
for the teaching  
of English in the UK

Ireland

Working English in  
Ireland



Australia

ENGLISH  
AUSTRALIA

NEAS

New Zealand

ENGLISH NEW ZEALAND

Kaplan International English  
in New Zealand is fully  
accredited by NZQA

Canada

Langues Canada  
Langues Canada



USA

ABEET







# University Placement Service

The process of providing students with academic support, step-by-step application guidance, organized university visits, and obtaining a CLOA (Conditional Letter of Acceptance) is called the University Placement Service.

**Only students who are booked with us for 8+ weeks are eligible for this service.**

## Academic Advising

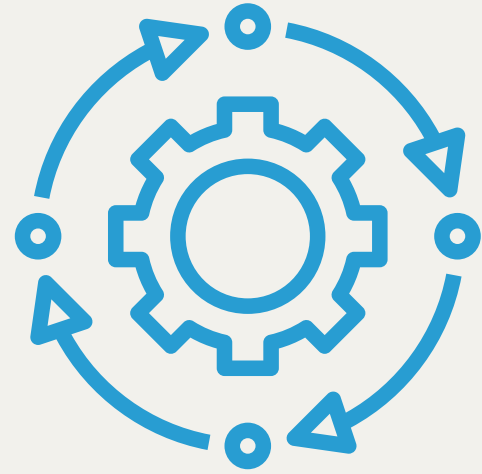
Academic advisors pay close attention to UPS students to ensure that they are given the support they need to achieve the required English level for transfer.

## Application Help

University Placement Advisors assist students with collecting all their documents and submitting their applications. If the student meets all requirements for the program, our partner schools will issue a CLOA.

## Kaplan UPS Fees

- Free pre-arrival test
- 8 – 15 weeks English course: \$175
- 16 weeks + English: fee waived
- Extra application to partner: \$50



# THE APPLICATION PROCESS

A step-by-step overview, from the initial inquiry to obtaining a CLOA

## 1. INITIAL CONTACT

Sales Advisor/UPS Advisor collects UPS Inquiry Form (preferred), Kaplan pre-arrival test, high school and university transcripts.

## 2. PROGRAM SUGGESTIONS

Once the UPS Advisor receives the documents, they will send 2-3 program suggestions and admission requirements.

## 3. STUDENT ENROLMENT

Sales Advisor processes KI enrolment, books the student with EAP + UPS.

## 4. APPLICATION

The UPS Advisor prepares the application and requests further documentation from the sales advisor or agent if needed.

## 5. CLOA

If accepted conditionally, the UPS Advisor sends acceptance package to the student and/or agent, and explains next steps.





# Application Checklist



If a 'complete' application is sent, CLOA turnaround times are much quicker. The Kaplan 'Level in Progress' and 'Level Completion' letters are crucial in obtaining a conditional and final acceptance from our partners. Kaplan UPS Advisors can provide these letters to eligible students.



**PASSPORT**



**TRANSCRIPTS, DIPLOMA, DEGREE:  
TRANSLATED + ORIGINAL**



**KAPLAN LETTER OF ACCEPTANCE**



**KAPLAN 'LEVEL IN PROGRESS' LETTER**



**CREDIT CARD DETAILS**

### Level in Progress Letter

May 2, 2021

This is to confirm that the student below will be studying at Kaplan International in the English for Academic Pathways Program. The student is working towards meeting the English level and EAP course requirement for entry into your institute:

Student name	XXXXXX XXXXXX
Kaplan student ID	2061620
Course start date	May 2021
Course end date	April 2022
Currently studying in English level	<input checked="" type="checkbox"/> A1 / Elementary <input type="checkbox"/> A2 / Lower Intermediate <input type="checkbox"/> B1 / Intermediate <input type="checkbox"/> B2 / Higher Intermediate <input type="checkbox"/> C1 / Advanced <input type="checkbox"/> C2 / Proficiency
Anticipated English level upon the course end date	<input type="checkbox"/> B2 / Higher Intermediate <input checked="" type="checkbox"/> C1 / Advanced OR <input type="checkbox"/> C2 / Proficiency
English for Academic Pathways course (5 weeks min.)	<input checked="" type="checkbox"/> In progress <input type="checkbox"/> Completed

Thank you for your assistance; if you have any questions about this student or require any further information, please do not hesitate to contact me.

Sincerely Yours,  
Safa Siddiqi



University Placement Service Canada, Kaplan International Languages

ENTRY LEVEL	ELEMENTARY	LOWER INTERMEDIATE	INTERMEDIATE	HIGHER INTERMEDIATE	ADVANCED
LENGTH OF STUDY IN WEEKS (minimum/maximum)	A1 TOEFL® 0-12	A2 TOEFL® 13-36 IELTS 2.5-4.0	B1 TOEFL® 37-54 IELTS 4.5-5.0	B2 TOEFL® 55-74 IELTS 5.5-6.0	C1 TOEFL® 75-91 IELTS 6.5-7.0
50 WEEKS	General English + Specific Skills class	General English + Specific Skills class	General English + Specific Skills class or IELTS Intensive	General English + EAP Specific Skills class	General English + EAP Specific Skills class
40 WEEKS		General English + Specific Skills class	General English + Specific Skills class or IELTS Intensive	General English + EAP Specific Skills class	General English + EAP Specific Skills class
30 WEEKS			General English + Specific Skills class or IELTS Intensive	General English + EAP Specific Skills class	General English + EAP Specific Skills class
20 WEEKS				General English + EAP Specific Skills class	General English + EAP Specific Skills class
10 WEEKS					General English + EAP Specific Skills class

### Level Completion Letter

May 2, 2021

This is to confirm that the student below has successfully completed the English for Academic Pathways Program requirement for entry into your institute. This includes completion of the articulated English level and a minimum of five weeks studying in the EAP course.

Student name	XXXXXX XXX XXX XXXXX
Kaplan student ID	2056345
Course start date	July 2019
Course end date	May 2020
Last English level completed	<input type="checkbox"/> B2 / Higher Intermediate <input checked="" type="checkbox"/> C1 / Advanced (with 90%) <input type="checkbox"/> C2 / Proficiency
Currently in English level	<input type="checkbox"/> B2 / Higher Intermediate <input type="checkbox"/> C1 / Advanced <input checked="" type="checkbox"/> C2 / Proficiency
English for Academic Pathways course (5 weeks min.)	<input type="checkbox"/> In progress <input checked="" type="checkbox"/> Completed

*\*A student may have completed the required English level before the course end date. Students receive their KI Certificate when finishing their course.*

Thank you for your assistance; if you have any questions about this student or require any further information, please do not hesitate to contact me.

Sincerely Yours,  
Marcel Cundari

University Placement Service Canada  
Kaplan International

ENTRY LEVEL	ELEMENTARY	LOWER INTERMEDIATE	INTERMEDIATE	HIGHER INTERMEDIATE	ADVANCED
LENGTH OF STUDY IN WEEKS (minimum/maximum)	A1 TOEFL® 0-12	A2 TOEFL® 13-36 IELTS 3.5-4.0	B1 TOEFL® 37-54 IELTS 4.5-5.0	B2 TOEFL® 55-74 IELTS 5.5-6.0	C1 TOEFL® 75-91 IELTS 6.5-7.0
50 WEEKS	General English + Specific Skills class	General English + Specific Skills class	General English + Specific Skills class or IELTS Intensive	General English + EAP Specific Skills class	General English + EAP Specific Skills class
40 WEEKS		General English + Specific Skills class	General English + Specific Skills class or IELTS Intensive	General English + EAP Specific Skills class	General English + EAP Specific Skills class
30 WEEKS			General English + Specific Skills class or IELTS Intensive	General English + EAP Specific Skills class	General English + EAP Specific Skills class
20 WEEKS				General English + EAP Specific Skills class	General English + EAP Specific Skills class
10 WEEKS					General English + EAP Specific Skills class



## KAPLAN INTERNATIONAL LANGUAGES PARTNER UNIVERSITIES AND COLLEGES IN CANADA







# UPDATE: NEW ENHANCED PARTNERSHIPS!

This is Part One of our 'Enhanced Partnership Launch'. These partners were selected for students who are interested in studying for 8+ months at a public institution known for academic excellence, paid co-op opportunities, and a truly Canadian experience.

Stay tuned for more information on Part Two!





Premium Public Partners



Quick CLOA Turnaround Time



Seamless Transfer



Work Opportunities



Path to Immigration

# Enhanced Partnerships: Part 1





# Enhanced Partnerships - Ontario

## Institution Name

Niagara  
College -  
Toronto

Sheridan  
College

Brock  
University

## CLOA Turnaround Time



5 days

10-14 days

3-4 days

## Price



\$15,000+/year

\$18,000+/year

\$30,000+/year

## Co-op Options



## Kaplan Level Required for Direct Transfer



C1 + min. 5 wks EAP



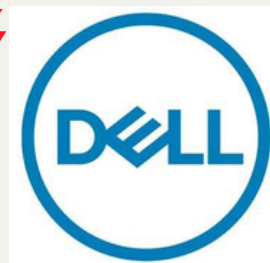
C1 + min. 5 wks EAP



C1 + min. 5 wks EAP

Note: Co-Op is always paid. Minimum wage in Ontario is \$14.25 per hour. Most of our partner placements exceed this amount.





# CO-OP IN CANADA

## What is it?

- A program where students get the chance to work in an industry related to their field
- Most co-op programs are structured so that each term or semester of schooling is alternated with a term or semester of work
- Students are paid for their work

## What are the benefits of co-op?

- Students gain real industry experience
- Employers may hire students as permanent staff after graduation
- Canadian work experience

## How do students find their co-op jobs?

- Our post-secondary partners have designated co-op departments that work with students to assist them in securing an interview and placement

Note: This calibre of co-op opportunities can only be found at public institutions





**Brock**  
University

## PARTNER HIGHLIGHTS

96% OF GRADUATES SECURE  
EMPLOYMENT AFTER THEIR  
STUDIES



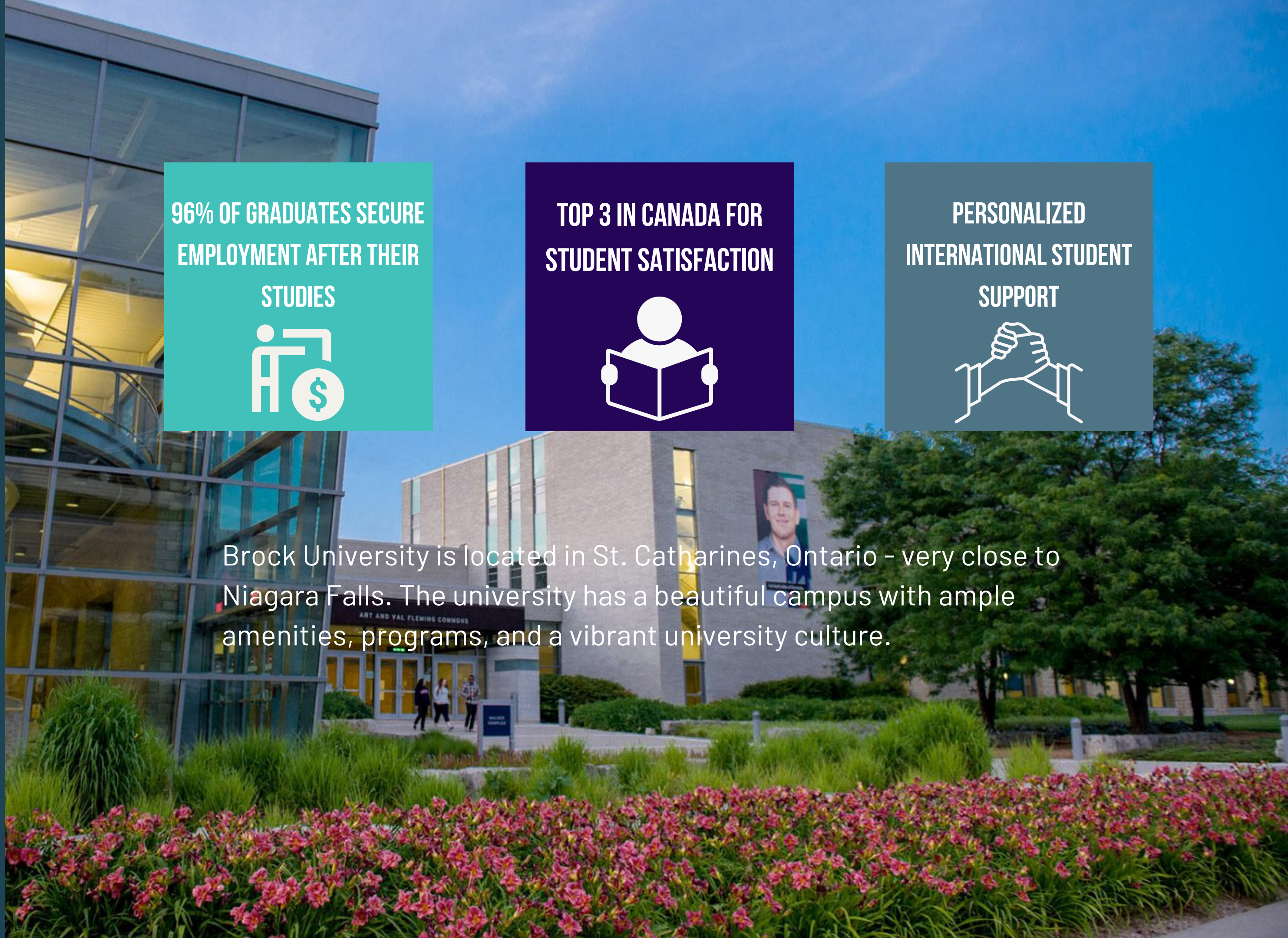
TOP 3 IN CANADA FOR  
STUDENT SATISFACTION



PERSONALIZED  
INTERNATIONAL STUDENT  
SUPPORT



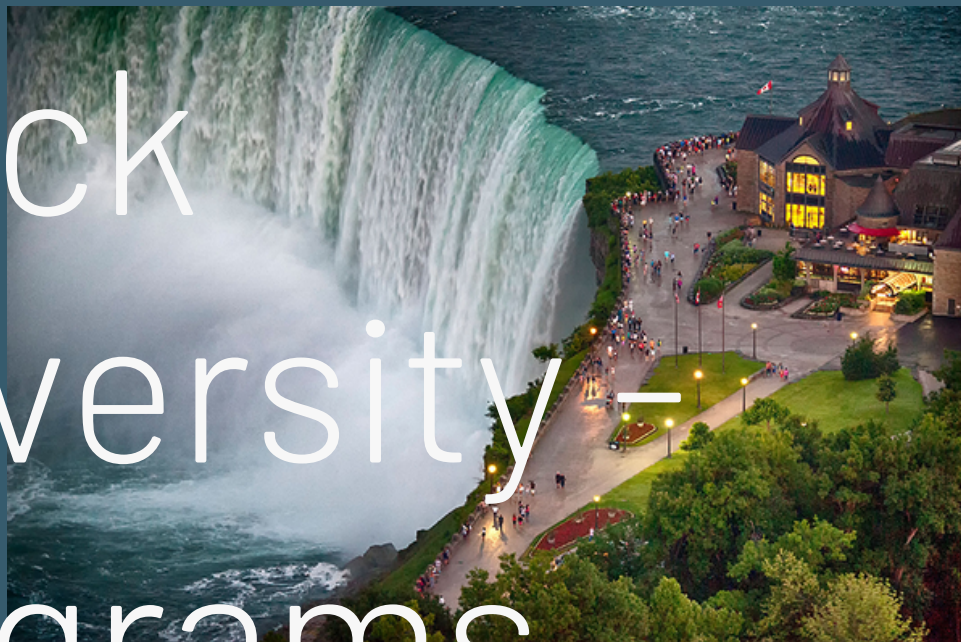
Brock University is located in St. Catharines, Ontario - very close to Niagara Falls. The university has a beautiful campus with ample amenities, programs, and a vibrant university culture.







# Brock University – Programs



Learning comes alive through experiential education, a key component in every undergraduate and graduate program at Brock University. Brock works with over 6000 co-op employers, 86% of whom go on to hire students as full-time staff.



**Credential**



**Area of Study**



**Length of Study**

## **Undergraduate Degree**

- Applied Health Sciences
- Education
- Business
- Humanities
- Arts
- Math & Science
- Social Sciences

• 4 years

## **Undergraduate Degree with Co-Op**

- Applied Health Sciences
- Business
- Humanities
- Arts
- Math & Science
- Social Sciences

• 4 years

## **Masters Degree**

- Business
- Math & Science

• 1-2 years





# Sheridan

## PARTNER HIGHLIGHTS

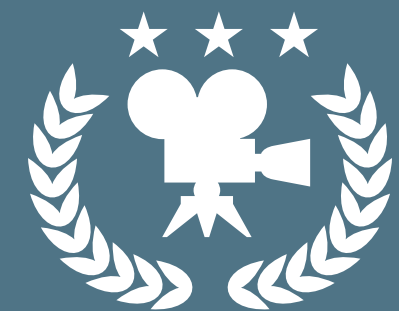
80+ PROGRAMS WITH WORK-  
INTEGRATED OPPORTUNITES



130 PROGRAMS ACROSS  
5 FACULTIES

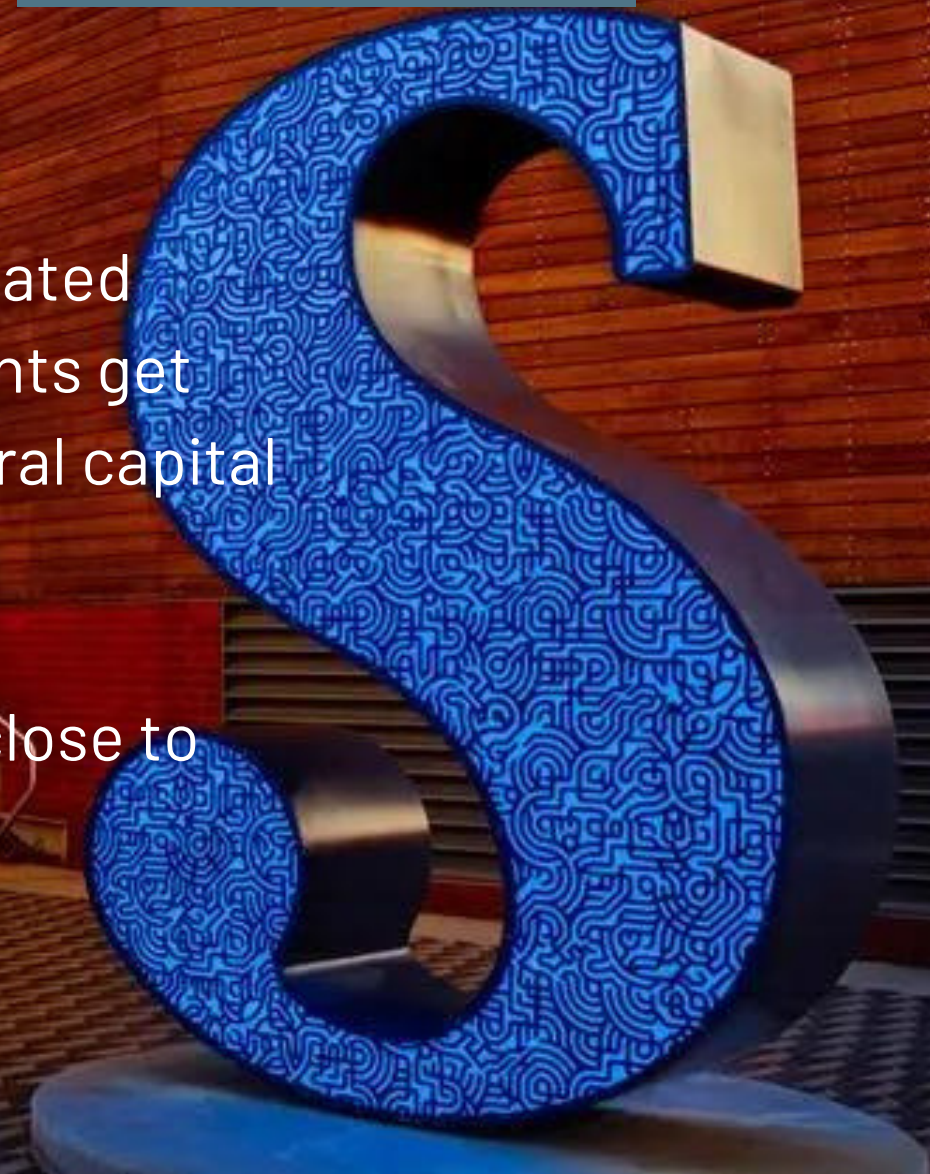


ACADEMY AWARD WINNING  
ALUMNI



Arts and sports. Night life and nature. Food and fun. Being located across the Greater Toronto Area (GTA) means Sheridan students get unlimited access to Canada's biggest urban playground, cultural capital and business centre.

Sheridan's campuses are located in three Ontario cities very close to Toronto — Oakville, Brampton and Mississauga.







# Sheridan College – Programs



Sheridan offers more than 130 programs across five faculties, including 25 degree programs. They are nationally and internationally recognized for excellence in business, digital media and communications, performing arts, visual arts and design, applied computing and engineering sciences, and community service studies.



**Credential**



**Area of Study**



**Length of Study**

## **Certificate**

- General Arts & Science
- Business

- 9 months

## **Undergraduate Diploma**

- Animation, Arts, and Design
- Business
- Applied Science and Technology
- Applied Health and Community Studies

- 2-3 years

## **Undergraduate Diploma with Co-Op**

- Animation, Arts, and Design
- Business
- Applied Science and Technology
- Applied Health and Community Studies

- 2-3 years





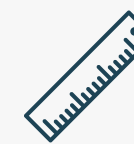
# Sheridan College – Programs



**Credential**



**Area of Study**



**Length of Study**

## **Post-Graduate Certificate**

- Animation, Arts, and Design
- Business
- Applied Science and Technology

• 8 months

## **Post-Graduate Certificate with Co-Op**

- Applied Health Sciences
- Business
- Humanities
- Arts
- Math & Science
- Social Sciences

• 1 year

## **Undergraduate Degree**

- Animation, Arts, and Design
- Business
- Applied Science and Technology
- Applied Health and Community Studies

• 4 years





International students can enrol in Niagara College's most sought-after programs while gaining access to the significant employment and entertainment opportunities offered by Canada's largest and most multicultural city.



## PARTNER HIGHLIGHTS

**MINUTES AWAY FROM KI  
TORONTO**



**COMPREHENSIVE CAREER  
SERVICES**



**PERSONALIZED  
INTERNATIONAL STUDENT  
SUPPORT**







# Niagara College Toronto – Programs

Niagara College and the Toronto School of Management have partnered to offer select graduate certificates and diploma programs in downtown Toronto.



**Credential**



**Area of Study**



**Length of  
Study**

**Undergraduate  
Diploma**

• Business

• 2 years

**Post-Graduate  
Certificate**

• Business

• 8 months

**Post-graduate  
Certificate with Co-  
Op**

• Human Resources

• 1 year



# Enhanced Partnerships – British Columbia

**Institution Name**

Thompson  
Rivers  
University

Camosun  
College

Capilano  
University

**CLOA Turnaround  
Time**



10-14 days

3-4 days

7-14 days

**Price**



\$15,000+/year

\$18,000+/year

\$30,000+/year

**Co-op Options**



**Kaplan Level Required  
for Direct Transfer**



C1 + min. 5 wks EAP



C1 + min. 5 wks EAP



C1 + min. 5 wks EAP

Note: Co-Op is always paid. Minimum wage in British Columbia is \$15.20 per hour. Most of our partner placements exceed this amount.





## PARTNER HIGHLIGHTS

Since 1970, TRU has taken pride in providing an excellent education to every student who goes to them — from a wide variety of backgrounds and perspectives, at various stages of the learning journey. They serve more than 25,000 students — on their campuses in Kamloops (main campus) and Williams Lake, they also offer distance and online courses.

**1+ MILLION SQ. FT OF  
LEARNING SPACE!**



**EMERGING MARKET JOB  
OPPORTUNITIES**



**SMALL CLASS SIZES**







# TRU – Programs

TRU offers more than 140 on-campus programs and 55 Open Learning programs in areas such as arts, business, computer science, education, environment, law, nursing, sciences, social work, tourism and trades and technology. Their average class size is 31 students.



**Credential**



**Area of Study**



**Length of Study**

## **Undergraduate Diploma**

- Business
- Science
- Arts

• 2 years

## **Undergraduate Degree with Co-Op**

- Science
- Fine Arts
- Business
- General Arts

• 4 years

## **Post-Graduate Certificate with Co- Op**

- Business

• 1.5 - 2 years





# TRU – Programs



**Credential**



**Area of Study**



**Length of Study**

## **Masters Degree**

- Education

- 1.5-2 years

## **GAP Year – High School Graduates**

- Access to First Year level classes

- 1-2 semesters

## **Visiting Student Program**

- Access to Year 1-4 level classes

- 1-2 semesters





## PARTNER HIGHLIGHTS

ONE OF THE LARGEST PUBLIC  
COLLEGES IN B.C.



92% OF GRADS ARE  
EMPLOYED



160+ PROGRAMS



Camosun is located in stunning Victoria, B.C. The school is large enough to provide great services and facilities for a vibrant campus environment on beautiful Vancouver Island, yet small enough to offer students the individual support, care, and attention rarely found in most post-secondary institutions.





# Camosun College – Programs

Camosun's education offerings include university transfer and applied degree programs; career and trades training; upgrading and preparatory programs; and continuing education. Camosun College has earned an outstanding reputation for teaching excellence, provide one of Canada's best learning experiences.



**Credential**



**Area of Study**



**Length of Study**

## **Undergraduate Diploma**

- Arts & Science
- Business
- Engineering
- Engineering Bridge to University
- Health & Human Services
- Information Technology
- Sport & Exercise

• 8 months - 2 years

## **Undergraduate Diploma with Co-Op**

- Arts & Science
- Business
- Engineering
- Engineering Bridge to University
- Health & Human Services
- Information Technology
- Sport & Exercise

• 2 years

## **Associate Degree**

- Natural Sciences
- Arts & Humanities

• 2-3 years



# Camosun College - Programs



**Credential**



**Area of Study**



**Length of Study**

## Post-Graduate Certificate

- Accounting
- General Management
- Marketing
- Human Resources
- Hospitality Management

- 8 months - 2 years

## University Transfer

- Arts
- Business/Commerce
- Education
- Science
- Computer Science (1+3)
- Engineering (1+3)

- 1-2 years before transferring to university



**University of Victoria**



**Royal Roads University**



**SIMON FRASER UNIVERSITY**



**OTHER TOP UNIVERSITIES**





# CAPILANO UNIVERSITY

## PARTNER HIGHLIGHTS

95% STUDENT  
SATISFACTION



41 STUDENT CLUBS AND  
ASSOCIATIONS



80% OF STAFF OFFER DIRECT  
SUPPORT TO STUDENTS



Surrounded by lush forests and towering mountains while only a short distance from downtown Vancouver, CapU's main campus is ideally located for both outdoor adventurers and urban explorers. Vancouver is a beautiful, vibrant and ethnically diverse city known for its active outdoor lifestyle, innovative food scene and unique cultural experiences.





# Capilano University – Programs



**Credential**



**Area of Study**



**Length of Study**

**Undergraduate  
Diploma with Co-Op  
(1 option)**

- Tourism Management

• 2 years

**Post-Graduate  
Certificate with Co-  
Op (1 option)**

- Business Management

• 2 years







Shorter Certificate and  
Diploma Programs



Cost Effective



Seamless Transfer



Certificate Upon Completion

# Next Time:

## Enhanced Partnerships Part 2



**Thank you!**