



KAPLAN INTERNATIONAL LANGUAGES TORQUAY

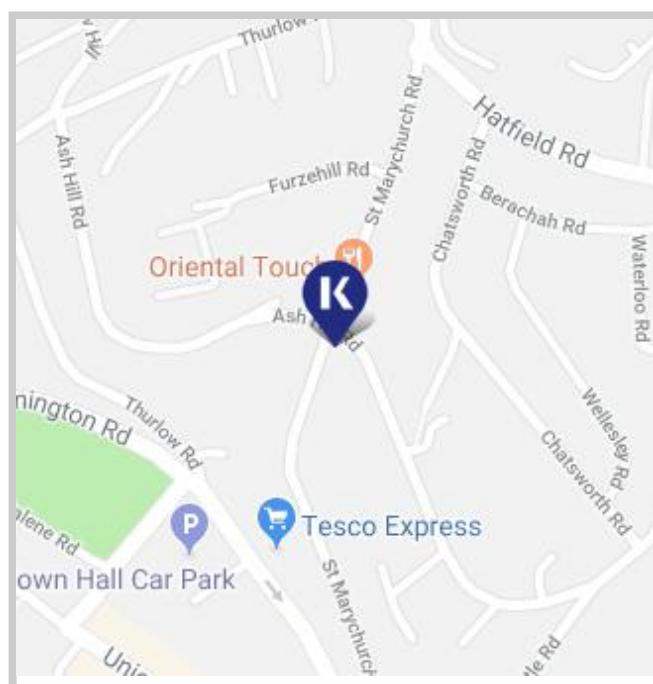
WHY CHOOSE TO STUDY IN OUR TORQUAY SCHOOL?

5 reasons to study here

- Located 3 minutes from the town center with easy access to all major cities
- Junior center is 5 minutes walk from the year round adult school
- Provides a Classic Program for students aged 40+
- Offers discounted one-to-one lessons in addition to regular classes
- Benefit from an on-site swimming pool perfect for the summer

Location and contact information

ADDRESS: 30 Ash Hill Road, Torquay, TQ1 3HZ
 PHONE: +44 (0)18 0321 0940
 FAX: N/A
 EMERGENCY CONTACT: +44 (0)78 1266 0824
 AT THIS ADDRESS SINCE: 2000
 PROVIDING ENGLISH COURSES SINCE: 1992



School information

PRINCIPAL: Anna Robinson
 TOTAL NUMBER OF TEACHERS: 11-16 (Full time teachers: 3-5)
 LANGUAGES SPOKEN BY STAFF: Arabic, Italian, Portuguese, Russian, Spanish, Turkish, Hungarian
 TEACHER QUALIFICATIONS: All teachers have a level of education normally represented by a degree and they also have a CELTA or equivalent qualification. Some also hold the higher level DELTA qualification, PGCE, or MA in applied linguistics

Accreditations and memberships



Is this school an exam center?

Yes, it is a Cambridge Boxhill OET Center and Trinity exam center.

ABOUT THE SCHOOL

NUMBER OF BUILDINGS:	2
NUMBER OF FLOORS:	2
TOTAL NUMBER OF CLASSROOMS:	10 (Classrooms without windows: 0)
SCHOOL FACILITIES:	Air conditioning, heating, Wi-Fi, computer lab/ multimedia center, library, self study center, cafeteria (hot meals available), vending machines, garden, sun terrace/ patio, swimming pool (free), parking facilities, prayer room, student lounge/ common room, school minibus
WHEELCHAIR / DISABLED ACCESS:	Yes but limited
EXTRA COST OF FACILITIES:	No
OTHER SERVICES PROVIDED:	Travel support, airport transfer, UPS (University Placement Service)
EXTRA COST OF OTHER SERVICES:	Airport transfer (£40 - £240)
NUMBER OF COMPUTERS AVAILABLE:	15 (additional chrome books available for student use)
LEVELS OF ENGLISH OFFERED:	Beginner, Elementary, Lower Intermediate, Intermediate, Higher Intermediate, Advanced, Proficiency
FIRST DAY AT SCHOOL:	Orientation starts every Monday at 09:15. There will be an academic induction, a placement test, an informative presentations on academics, student services, accommodation, and the social program, a tour of the local area, and the distribution of class timetables. The day will conclude with a welcome evening for new and existing students. On their first day, students are expected to bring their passport, visa, and a pen. Photos will be taken for student ID cards.



SAMPLE CLASS TIMETABLE

Morning

CLASS:	09:15 - 10:45
BREAK:	10:45 - 11:15
CLASS:	11:15 - 12:45

Afternoon

CLASS:	Tutorials and 1:1 tuition
BREAK:	N/A
ADDITIONAL STUDY	15:30 - 17:00

SAMPLE SPECIFIC SKILLS CLASS TIMETABLE

Morning class (Monday to Friday)

N/A

Afternoon class (Monday to Thursday)

13:45 - 15:15

SCHOOL MATERIALS

MATERIALS PROVIDED FOR STUDENTS:

K+ Course Books, K+ Learning Clubs, K+ Online, K+ Online Extra, Chromebooks, Interactive whiteboards, TV in class, DVD in class

IS THERE A BOOK DEPOSIT?

Yes (Price: charity donation)

IS THERE A MATERIALS FEE?

No



Courses and students

COURSES PROVIDED AT THIS SCHOOL:

General English, Semi-Intensive English, Intensive English, Evening General English, Academic Year, Academic Semester, Business Supplementary, Work & Study, IELTS Exam Preparation, Teacher Training, Classic Program (40+), Tailored Group Programs

SPECIAL / EXTRA COURSES PROVIDED:

Evening classes

AVERAGE NUMBER OF STUDENTS PER CLASS: 11-15

MINIMUM AGE OF STUDENTS: 16

AVERAGE AGE OF STUDENTS: 22-25

STUDENTS PER AGE GROUP: 18-21: 26% / 22-25: 28% / 26-30: 27% / Over 30: 19%

TOP 10 STUDENT NATIONALITIES: Saudi Arabia, Italy, Switzerland, Russia, Colombia, Oman, South Korea, Qatar, Spain, Turkey

School location and transport

	By foot	By bike	By bus	By subway/train
Time to the nearest café / restaurant:	3 minutes	N/A	N/A	N/A
Time to the nearest supermarket:	5 minutes	2 minutes	2 minutes	N/A
Time to the nearest post office:	5 minutes	2 minutes	2 minutes	N/A
Time to the nearest ATM / bank:	5 minutes	N/A	N/A	N/A
Time to the nearest sports center:	10 minutes	5 minutes	5 minutes	N/A
Time to the nearest hospital:	25 minutes	15 minutes	10 minutes	N/A
Time to the town center:	3 minutes	1 minutes	N/A	N/A



AIRPORT TRANSPORT

CLOSEST AIRPORT: Exeter Airport & Bristol Airport

	Line or Number	Cost	Duration
Airport to Torquay by coach:	National Express	£10	1 Hour
Airport to Torquay by Taxi:	N/A	£40	20 Min
International train station to Torquay:	N/A	N/A	N/A

ABOUT TORQUAY

NAME OF LOCATION:	Torquay
FAMOUS LANDMARKS:	Kent's Cavern, Thatchers Rock, Dartmoor National park
CUISINES WITHIN A 20-MINUTE WALK:	American, British, Chinese, Greek, Indian, Italian, Japanese, Middle Eastern, Seafood, Turkish
TRANSPORT WITHIN A 10-MINUTE WALK:	Buses
TOP 5 REASONS TO CHOOSE THIS CITY:	World famous for hospitality and a warm welcome, surrounded by outstanding natural beauty, rich in history and folklore, over 4 million visitors a year from around the world, lively harbourside lifestyle
WHAT MAKES THIS CITY UNIQUE?	Astounding literary heritage (home to Agatha Christie, Elizabeth Barrett Browning, and Rosemary Pilcher); Situated in the UK's only UNESCO listed urban geo park
ALTERNATIVE THINGS TO DO:	Embark on a breathtaking hike in Torbay, discover a wealth of local folklore and history, visit the world's first 'Transition Town' of Totnes
CITY PERSONALITY:	Active nightlife, charming, eco-friendly, foodie scene, friendly, hiking, historical, laid-back, natural landscape, ocean views, picturesque, popular, sports scene, traditional

Examples of nearby cities to visit

EXETER	Travel time: 25 minutes, price of return ticket: £8
LONDON	Travel time: 2.5/3 hours, price of return ticket: £55

Regular social activities

NATIONAL MARINE AQUARIUM IN PLYMOUTH	£12-25
WATER SPORTS	£8-32
DARTMOOR NATIONAL PARK	£25
BOWLING	£5
CORNWALL TRIP	£25-35
BOAT TRIP AROUND TORBAY	£5
AGATHA CHRISTIE TOUR	£15-25



Typical 2-week social schedule

Days	First week	Second week
MON	Orientation and welcome evening	Boat trip across the Bay
TUE	Bowling	Movie night
WED	Mystery pub tour	Kents Cavern
THU	Cockington and Devon Cream Tea	Torre Abbey / Dartmouth
FRI	Exeter day trip Half day trip	Agatha Christie tour
SAT	Dartmoor National Park	Plymouth

Number of Social activities per week: 6

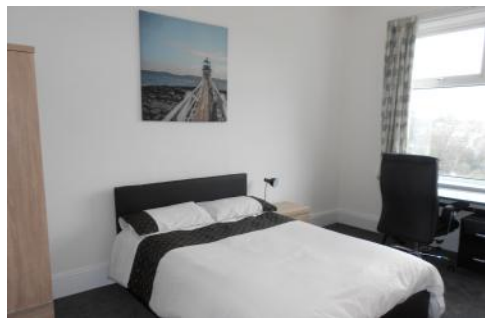


LIVING COST (SAMPLE PRICES FOR ITEMS IN THIS CITY)

- Bottle of water: £1
- Meal out for two: £20
- Local bus ticket: £2
- Cinema ticket: £7
- Coffee: £2
- Takeaway pizza: £7
- Local train ticket: £4
- Can of coke: £1
- Sandwich: £1-3
- Bike rental: £15/week

ACCOMMODATION IN TORQUAY

ST MICHAEL'S



ADDRESS:	36 Ash Hill Road TQ1 3JD
WEBSITE:	N/A
ACCOMMODATION TYPE:	Double room(s) and single en-suite bathroom(s), communal kitchen, communal lounge/ common area, dining area, TV in the bedroom, TV in the common area, Netflix
SERVICES AVAILABLE:	Laundry, Wi-Fi , linen and towels, cleaning service
EXTRA COST OF SERVICES:	No
BEDROOM:	TV, Wardrobe/ closet, desk, lamp, chair
KITCHEN:	Pots & pans, cooking utensils, cutlery & crockery, microwave, oven, stovetop, toaster, kettle, fridge, freezer, dishwasher, washing machine, tumble dryer, iron and ironing board, vacuum cleaner
FACILITIES:	Outdoor space, picnic area, laundry facilities, bike room
EXTRA COST OF FACILITIES:	No
FAMOUS LANDMARKS NEARBY:	English Riviera, UNESCO Geo Park, Dartmoor National Park
VISITORS OR GUESTS ALLOWED?	No
NOISE RESTRICTIONS?	Yes (From 22:30 every day)
SMOKING ALLOWED IN THE RESIDENCE?	No
24-HOUR SECURITY?	Yes
ROOM CLEANING:	Once a week
LINEN CHANGING:	Bed linen changed every two weeks, rooms cleaned weekly. Towels - student responsibility for cleaning
AVAILABILITY:	Year-round
MINIMUM NUMBER OF WEEKS?	No minimum
CHECK-IN AND CHECK-OUT TIMES:	Check-in: 11:00 / Check-out: 10:30
ROOM DEPOSIT?	No

	By foot	By bike	By bus	By subway/train
Time to the school (Torquay):	2 minutes	1 minute	N/A	N/A
Time to the nearest café / restaurant:	2 minutes	N/A	N/A	N/A
Time to the nearest supermarket:	5 minutes	2 minutes	2 minutes	N/A
Time to the nearest post office:	5 minutes	2 minutes	2 minutes	N/A
Time to the nearest ATM / bank:	5 minutes	2 minutes	2 minutes	N/A
Time to the nearest sports center:	5 minutes	2 minutes	2 minutes	N/A
Time to the nearest hospital:	5 minutes	2 minutes	2 minutes	N/A
Time to the city center:	5 minutes	2 minutes	2 minutes	N/A
Time to the main airport:	N/A	N/A	50 minutes	50 minutes

HOST FAMILY INFORMATION



THINGS STUDENTS NEED TO BRING:

SERVICES INCLUDED:

EXTRA COST OF SERVICES:

MEALS PROVIDED:

Toiletries, prescription medication

Bed linen, towels, laundry once a week (free of charge), telephone use for emergencies

No

Yes

- **BREAKFAST:** Breakfast is usually a light meal consisting of cereal, fruit, toast, juice, or coffee. Hosts will usually ask you to prepare your own breakfast.
- **LUNCH:** You will be responsible for buying your own lunch at school, from a local restaurant, or the local shops.
- **DINNER:** You will usually eat dinner with your host, or occasionally you may prepare your own meal with food supplied by your host.

WILL THE HOMESTAY ARRANGE TO PICK UP THE STUDENT FROM THE AIRPORT?

TRANSPORT TO SCHOOL:

WHERE ARE THE HOST FAMILIES LOCATED?

ADDITIONAL INFORMATION:

No but all homestays will pick up students from the train or coach station as they arrive in Torbay

Your host will help you to find your way to and from school on your first day and will show you how to use public transport.

All host families are located in central Torquay

Homestays are 5-35 minutes of commute time by walking to the school; there are also excellent bus and transport services in the area