



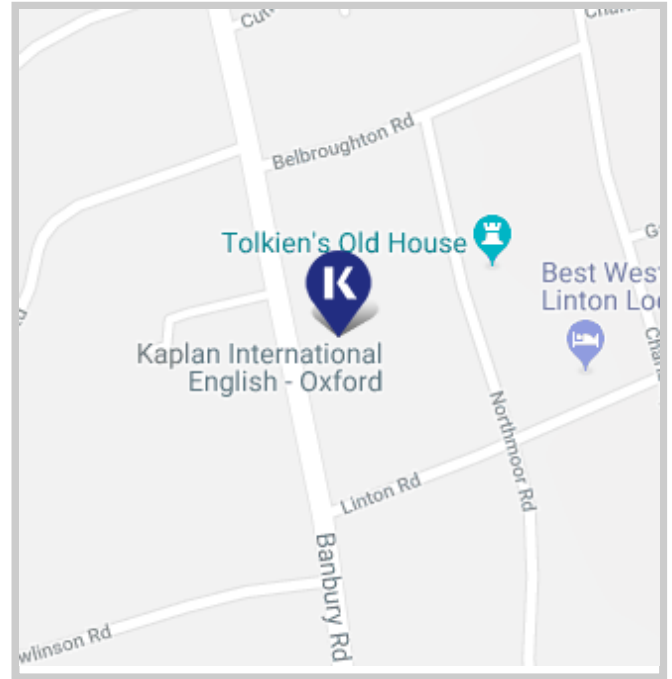
WHY CHOOSE TO STUDY IN OUR OXFORD SCHOOL?

5 reasons to study here

- Be part of the nearly 1000-year-old academic history of the city of Oxford
- Specialises in Exam Preparation programmes
- Located ten minutes from the city centre with easy access to London
- Boasts a stylish cafe with a garden featuring table tennis and a BBQ area
- The home of Kaplan's Real English courses

Location and contact information

ADDRESS: 108 Banbury Road, Oxford, OX2 6JU
 PHONE: +44 (0)18 6551 5808
 FAX: N/A
 EMERGENCY CONTACT: +44 (0)79 2102 0589
 AT THIS ADDRESS SINCE: 1974
 PROVIDING ENGLISH COURSES SINCE: 1974



School information

PRINCIPAL: Dawn Harry
 TOTAL NUMBER OF TEACHERS: 8 - 15 (Full time teachers: 4-8)
 LANGUAGES SPOKEN BY STAFF: Arabic, French, Spanish, Italian, Portuguese

Accreditations and memberships

Accredited by the
BRITISH COUNCIL
 for the teaching
 of English in the UK



Is this school an exam center?

Yes, it is a Trinity exam center.

ABOUT THE SCHOOL

NUMBER OF BUILDINGS:	2
NUMBER OF FLOORS:	3
TOTAL NUMBER OF CLASSROOMS:	11 (Classrooms without windows: 0)
SCHOOL FACILITIES:	Air conditioning, heating, Wi-Fi (free), top up SIM cards, computer lab/ multimedia center, self study center, cafeteria (hot meals available), garden, sun terrace/ patio, disabled / wheelchair access, prayer room, student lounge
WHEELCHAIR / DISABLED ACCESS:	Yes
EXTRA COST OF FACILITIES:	No
OTHER SERVICES PROVIDED:	Visa support, travel support, airport transfer, UPS (University Placement Service)
EXTRA COST OF OTHER SERVICES:	"Airport transfer: Heathrow £220, Gatwick £225, Stansted/Luton £275, St Pancras £275 "
NUMBER OF COMPUTERS AVAILABLE:	25
LEVELS OF ENGLISH OFFERED:	Elementary, Lower Intermediate, Intermediate, Higher Intermediate, Advanced
FIRST DAY AT SCHOOL:	Orientation starts every Monday at 08:00. This includes a series of placement tests, tour of Oxford, group lunch, presentations on academics, student welfare, accommodation, and the social program, and the distribution of class timetables. Classes start on Tuesdays. On their first day, students are expected to bring their passport and money for the bus.



SAMPLE CLASS TIMETABLE

Morning		Afternoon	
CLASS:	08:30 - 10:00	CLASS:	14:30 - 16:00
BREAK:	10:00 - 10:15	BREAK:	16:00 - 16:15
CLASS:	10:15 - 11:45	CLASS:	16:15 - 17:45

SAMPLE SPECIFIC SKILLS CLASS TIMETABLE

Morning class (Monday to Thursday)	Afternoon class (Monday to Thursday)
11:50 - 13:05 (Friday: 11:50 - 12:50)	13:10 - 14:25 (Friday: 13:25 - 14:25)

SCHOOL MATERIALS

MATERIALS PROVIDED FOR STUDENTS:

K+ Course Books, K+ Learning Clubs, K+ Learning Space, K+ Extra, Chromebooks, Interactive whiteboards

IS THERE A BOOK DEPOSIT?

Yes (Price: £20)

IS THERE A MATERIALS FEE?

No



Courses and students

COURSES PROVIDED AT THIS SCHOOL:	General English, Semi-Intensive English, Intensive English, Academic Year, Academic Semester, IELTS Exam Preparation, Teacher training: CLIL, Teaching Methodology
SPECIAL / EXTRA COURSES PROVIDED:	N/A
AVERAGE NUMBER OF STUDENTS PER CLASS:	11-15
MINIMUM AGE OF STUDENTS:	16
AVERAGE AGE OF STUDENTS:	22-25
STUDENTS PER AGE GROUP:	18-21: 43% / 22-25: 30% / 26-30: 13% / Over 30: 13%
TOP 10 STUDENT NATIONALITIES:	China, South Korea, Saudi Arabia, Argentina, Oman, Japan, Italy, France, Turkey, Kuwait

School location and transport

	By foot	By bike	By bus	By subway/train
Time to the nearest café / restaurant:	5-10 minutes	5 minutes	5 minutes	N/A
Time to the nearest supermarket:	5-10 minutes	5 minutes	5 minutes	N/A
Time to the nearest post office:	17 minutes	6 minutes	6 minutes	N/A
Time to the nearest ATM / bank:	5-10 minutes	5 minutes	5 minutes	N/A
Time to the nearest sports center:	30 minutes	8 minutes	13 minutes	N/A
Time to the nearest hospital:	60 minutes	17 minutes	14 minutes	N/A
Time to the city center:	23 minutes	6 minutes	6 minutes	N/A



AIRPORT TRANSPORT

CLOSEST AIRPORT: London Heathrow International Airport

	Line or Number	Cost	Duration
Airport to city center by bus:	National Express coach	£24	90 minutes
Airport to city center by train:	Heathrow Express coach to Paddington	£30	1 hour 40 minutes
International train station to city center:	London Paddington to Oxford	£26	60 minutes

ABOUT OXFORD

NAME OF LOCATION:	Oxford
FAMOUS LANDMARKS:	Radcliffe Camera, Bodleian Library, Bridge of Sighs, Christchurch College and Meadows, Carfax Tower, Oxford Botanical Gardens
CUISINES WITHIN A 20-MINUTE WALK:	American, British, Chinese, European, Indian, Italian, Japanese, Middle Eastern, Seafood, Spanish
TRANSPORT WITHIN A 10-MINUTE WALK:	Buses, buses and e-scooter hire
TOP 5 REASONS TO CHOOSE THIS CITY:	Home to the oldest English-speaking University, plenty of fantastic museums, great live music scene, beautiful historic architecture, bike-friendly city plus e-scooters to hire
WHAT MAKES THIS CITY UNIQUE?	Vibrant cosmopolitan city with small town friendly feel
ALTERNATIVE THINGS TO DO:	See the Headington shark, go to the Thirsty Meeples board game café, find the Turf Tavern, enjoy open mic nights at the Catweazle club
CITY PERSONALITY:	Academic, architecture, bike-friendly, cultural, famous, green, historical, iconic landmarks, museums, picturesque, popular, small town experience, traditional, university town, vibrant, youthful

Examples of nearby cities to visit

LONDON	Travel time: 60 minutes, price of return ticket: £25
BIRMINGHAM	Travel time: 60 minutes, price of return ticket: £37

Regular social activities

BOWLING	£7.50
PUB NIGHT	£3-5 per drink
ICE SKATING	£8
MUSEUM VISIT	Free
CHRISTCHURCH COLLEGE VISIT	£14
IN-SCHOOL PARTY	£5-7
PUNTING	£6.50



Typical 2-week social schedule

Days	First week	Second week
MON	Tour of Oxford	Visit to Christchurch College
TUE	Cinema night	Bowling
WED	Karaoke party	Restaurant night
THU	Visit Ashmolean	Cream teas
FRI	Pub crawl	Visit to Blenheim Palace
SAT	Visit to London	Visit to Warwick Castle & Stratford



Number of organised Social activities per week: 2 - 4

LIVING COST (SAMPLE PRICES FOR ITEMS IN THIS CITY)

- Bottle of water: £1
- Meal out for two: £30
- Local bus ticket: £4
- Cinema ticket: £8
- Coffee: £2-3
- Takeaway pizza: £10
- Local train ticket: N/A
- Can of coke: £1
- Sandwich: £4
- Bike rental from £10/week

ACCOMMODATION IN OXFORD

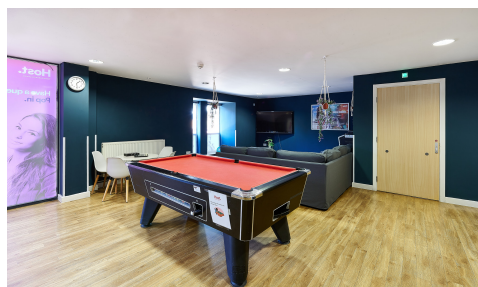
STUDENT CASTLE



ADDRESS:	Osney Ln, Oxford OX1 1TE
WEBSITE:	https://www.studentcastle.co.uk/locations/oxford-student-accommodation/
ACCOMMODATION TYPE:	6 bedroom apartments, single room(s), en-suite bathroom(s), kitchen/lounge shared for the apartment
SERVICES AVAILABLE:	Laundry (extra charge), Wi-Fi, cleaning service, bed linen
EXTRA COST OF SERVICES:	Laundry: £3.60 for wash, £1.80 for drying
BEDROOM:	Wardrobe/closet, desk, chair
KITCHEN:	Pots & pans, cooking utensils, cutlery & crockery, microwave, oven, stovetop, kettle, fridge
FACILITIES:	Common room, study areas, gym, laundry facilities, bike room, 24 hour security, superfast WiFi
EXTRA COST OF FACILITIES:	No
FAMOUS LANDMARKS NEARBY:	Oxford Castle, Bodleian Library, The Radcliffe Camera, The Bridge of Sighs, Carfax Tower, The Covered Market
VISITORS OR GUESTS ALLOWED?	Yes
NOISE RESTRICTIONS?	Yes (From 23:00 every day)
SMOKING ALLOWED IN THE RESIDENCE?	No
24-HOUR SECURITY?	On-site security until late, then patrols throughout the night
ROOM CLEANING:	Bedrooms cleaned on arrival, flat kitchens cleaned once a week. Bins emptied twice a week
LINEN CHANGING:	Linen changed on arrival
AVAILABILITY:	Students aged 18+
MINIMUM NUMBER OF WEEKS?	No minimum
CHECK-IN AND CHECK-OUT TIMES:	Check-in: 14:00 / Check-out: 10:00
ROOM DEPOSIT?	No - Card details taken on arrival and charged only where damage occurs

	By foot	By bike	By bus	By subway/train
Time to the school (Oxford):	35 minutes	10 minutes	15 minutes	N/A
Time to the nearest café / restaurant:	5 minutes	N/A	N/A	N/A
Time to the nearest supermarket:	5 minutes	N/A	N/A	N/A
Time to the nearest post office:	10 minutes	5 Minutes	N/A	N/A
Time to the nearest ATM / bank:	5 Minutes	N/A	N/A	N/A
Time to the nearest sports center:	N/A	N/A	N/A	N/A
Time to the nearest hospital:	N/A	15 minutes	35 Minutes	N/A
Time to the city center:	5 minutes	N/A	N/A	N/A
Time to the main airport:	N/A	N/A	1.5–2.5 hours	60 minutes

THE MEWS

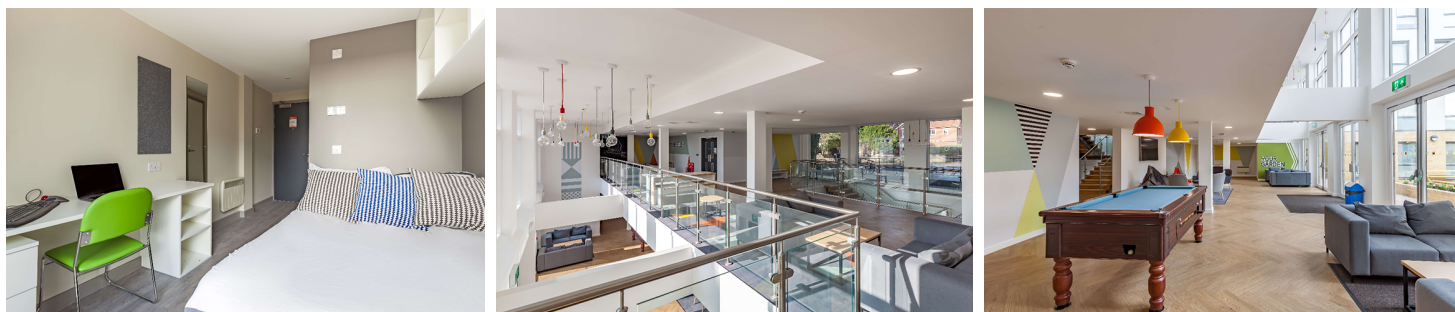


ADDRESS:	Glanville Road, Oxford, OX4 2SY
WEBSITE:	https://host-students.com/
ACCOMMODATION TYPE:	4-bedroom apartment, single room(s), en-suite bathroom, private kitchen for the apartment, communal lounge/common area for the halls/hostel, TV in the common area
SERVICES AVAILABLE:	Laundry (extra charge), Wi-Fi, Linen provided, need to bring own towels
EXTRA COST OF SERVICES:	N/A
BEDROOM:	Wardrobe/closet, desk, lamp, chair
KITCHEN:	Pots & pans, cooking utensils, cutlery & crockery, microwave, oven, stovetop, toaster, kettle, fridge, freezer
FACILITIES:	Coin-operated laundry facilities, outside bike storage
EXTRA COST OF FACILITIES:	-
FAMOUS LANDMARKS NEARBY:	Christchurch College, many local bars and restaurants
VISITORS OR GUESTS ALLOWED?	No
NOISE RESTRICTIONS?	Yes (from 23:00 every day)
SMOKING ALLOWED IN THE RESIDENCE?	No
24-HOUR SECURITY?	Yes
ROOM CLEANING:	Cleaned on arrival, then common areas are cleaned once a week after that. Students are responsible for cleaning their own rooms
LINEN CHANGING:	Linen cleaned on arrival, students are responsible for cleaning their own linen
AVAILABILITY:	18/01/2022 - 24/08/2024
MINIMUM NUMBER OF WEEKS?	No minimum
CHECK-IN AND CHECK-OUT TIMES:	Check-in: 14:00 Check-out: 10:00
ROOM DEPOSIT?	No, card details taken on arrival and charged only when damage occurs

	By foot	By bike	By bus	By subway/train
Time to the school (Oxford):	60 minutes	15 minutes	30 minutes	N/A
Time to the nearest café / restaurant:	5 minutes	2 minutes	N/A	N/A
Time to the nearest supermarket:	2 minutes	N/A	N/A	N/A
Time to the nearest post office:	20 minutes	6 minutes	14 minutes	N/A
Time to the nearest ATM / bank:	10 minutes	5 minutes	N/A	N/A
Time to the nearest sports center:	20 minutes	6 minutes	14 minutes	N/A
Time to the nearest hospital:	48 minutes	20 minutes	33 minutes	N/A
Time to the city center:	35 minutes	10 minutes	13 minutes	N/A
Time to the main airport:	N/A	N/A	2.5 hours	N/A

ACCOMMODATION IN OXFORD

BEECH HOUSE



ADDRESS:	36-40 London Road, Oxford, OX3 7PA
WEBSITE:	Oxford student accommodation at Beech House Unite Students
ACCOMMODATION TYPE:	Ensuites
SERVICES AVAILABLE:	Laundry Room
EXTRA COST OF SERVICES:	£5 for both washing and drying
BEDROOM:	Bed, desk and chair, storage, en-suite with shower.
KITCHEN:	Hob, oven, microwave, fridge and freezer, plenty of storage
FACILITIES:	24 hour on-site support team, bike storage, vending machines
EXTRA COST OF FACILITIES:	None
FAMOUS LANDMARKS NEARBY:	Christ Church College, Oxford Brookes University
VISITORS OR GUESTS ALLOWED?	Yes - but maximum of 2 nights
NOISE RESTRICTIONS?	23:00
SMOKING ALLOWED IN THE RESIDENCE?	No
24-HOUR SECURITY?	Yes
ROOM CLEANING:	On arrival only
LINEN CHANGING:	On arrival only
AVAILABILITY:	3rd to 29th July
MINIMUM NUMBER OF WEEKS?	N/A
CHECK-IN AND CHECK-OUT TIMES:	Saturday after 3pm, anytime on a Sunday. 10:00 check out on Saturdays only
ROOM DEPOSIT?	No

	By foot	58 minutes	1 minute	5 minutes
Time to the school:	58 minutes	16 minutes	27 minutes	N/A
Time to the nearest café / restaurant:	1 minute	1 minute	N/A	N/A
Time to the nearest supermarket:	5 minutes	1 minute	N/A	N/A
Time to the nearest post office:	8 minutes	3 minute	N/A	N/A
Time to the nearest ATM / bank:	5 minutes	1 minute	N/A	N/A
Time to the nearest sports center:	7 minutes	2 minutes	6 minutes	N/A
Time to the nearest hospital:	9 minutes	2 minutes	8 minutes	N/A
Time to the city center:	38 minutes	9 minutes	16 minutes	N/A
Time to the main airport:	N/A	N/A	90 minutes	Taxi - 45 minutes

HOST FAMILY INFORMATION



THINGS STUDENTS NEED TO BRING:

SERVICES INCLUDED:

EXTRA COST OF SERVICES:

MEALS PROVIDED:

Toiletries, personal items to make their room feel like home, prescription medication

Bed linen, towels, laundry once a week (free of charge)

No

Yes

- **BREAKFAST:** Breakfast is usually a light meal consisting of cereal, fruit, toast, juice, or coffee. Hosts will usually ask you to prepare your own breakfast.
- **LUNCH:** You will be responsible for buying your own lunch at school, from a local restaurant, or the local shops.
- **DINNER:** You will usually eat dinner with your host, or occasionally you may prepare your own meal with food supplied by your host.

WILL THE HOMESTAY ARRANGE TO PICK UP THE STUDENT FROM THE AIRPORT?

TRANSPORT TO SCHOOL:

WHERE ARE THE HOST FAMILIES LOCATED?

ADDITIONAL INFORMATION:

No

Your host will help you to find your way to and from school on your first day and will show you how to use public transport.

Kidlington, North Oxford, Marston, Headington, Cowley, Blackbird Leys

Homestays are 20–45 minutes of commute time to the school; bus fares are reasonable and you can get a weekly or monthly pass