

OCCUPATIONAL ENGLISH TEST

The English Language Test for the Healthcare Sector

William SAVILLE

Business Development Manager - UK, Ireland & Europe

Anna Robinson

Principal for KIE Torquay school

10 January 2019



<https://www.youtube.com/watch?v=pkcDkp0TcmU>

OVERVIEW

01

Introducing OET

02

What is OET and why choose it?

03

OET at Kaplan

04

Q&A



INTRODUCING OET

OVERVIEW OF OET

- OET assesses the English language skills of healthcare professionals seeking to register and practise in an English speaking environment.
- OET replicates English language skills required for effective communication in a healthcare environment.
- It provides a valid and fair assessment of all four language skills: speaking, listening, reading and writing.

The OET Story



**Cambridge Assessment
English**

Over 100 years of
experience assessing the
English Language.

Cambridge
Boxhill Language
Assessment Trust
(CBLA)
2013



Leading Australian
vocational and higher
education provider.

WHO TAKES OET?



Dentists



Dieticians



Doctors



Nurses



Occupational
Therapists



Opticians



Pharmacists



Physiotherapists



Podiatrists



Radiographers

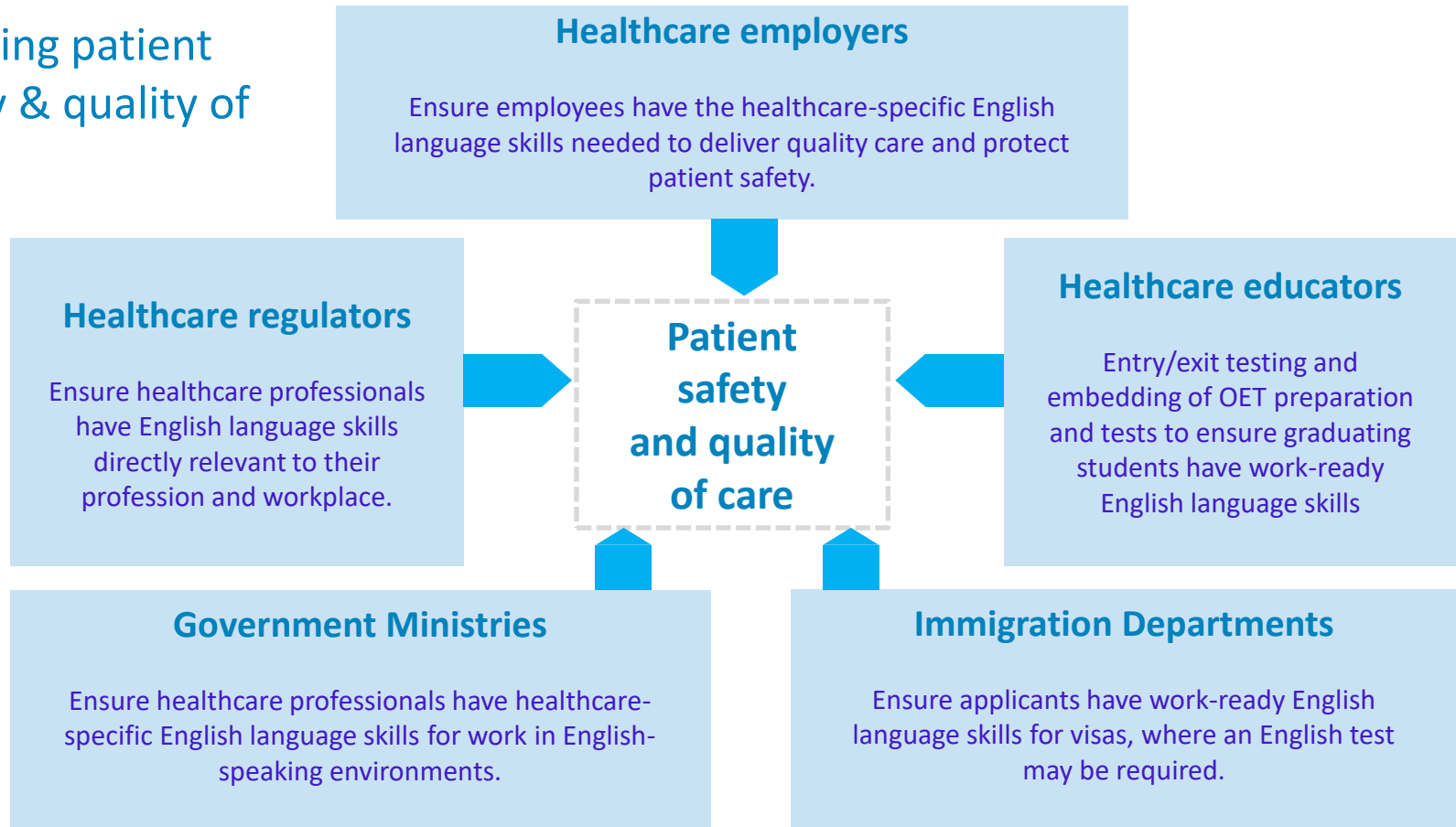


Speech Pathologists



Vets

Ensuring patient safety & quality of care





TESTING 14 TIMES PER YEAR



2019

Saturday 12 January
Saturday 02 February
Saturday 23 February
Saturday 16 March
Saturday 06 April
Saturday 18 May
Saturday 15 June
Sunday 07 July
Saturday 3 August
Saturday 31 August
Saturday 21 September
Sunday 13 October
Saturday 09 November
Saturday 07 December

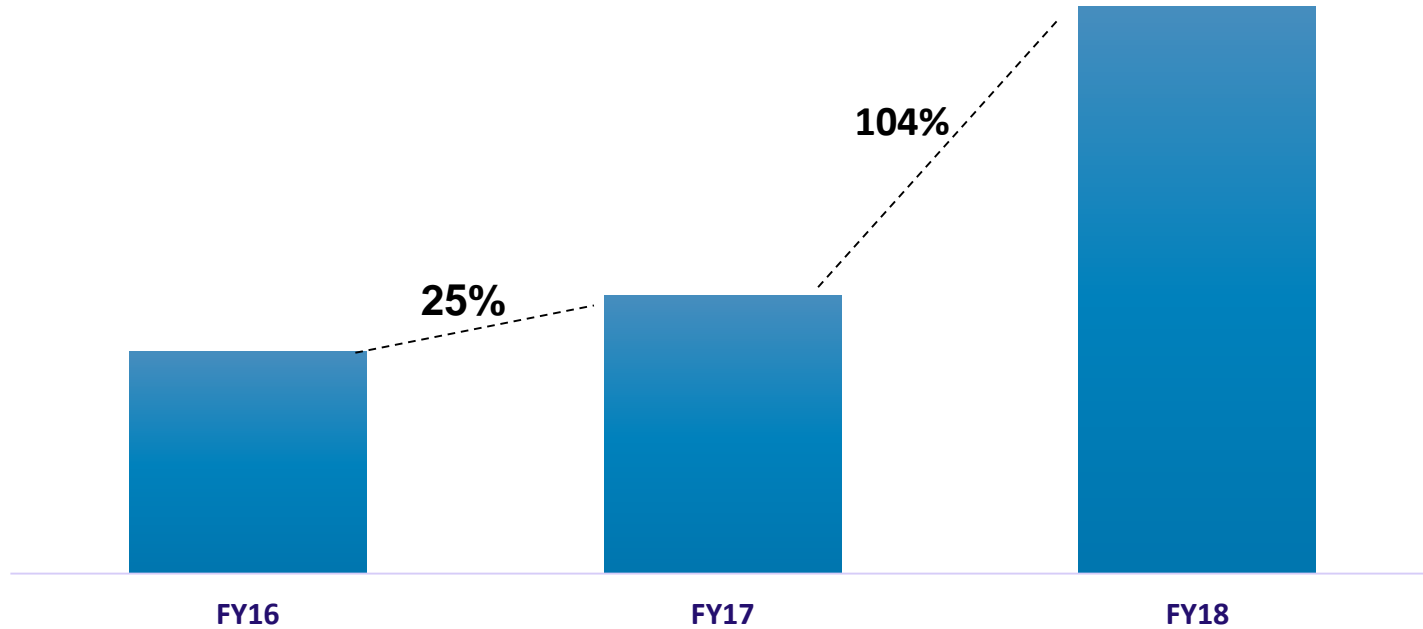
QUICK QUIZ

1. OET is designed to assess the English levels of what type of professionals?
2. How many variations of the OET test are there?
A) 1 B) 6 C) 12
3. How many test dates are there for OET in 2019?

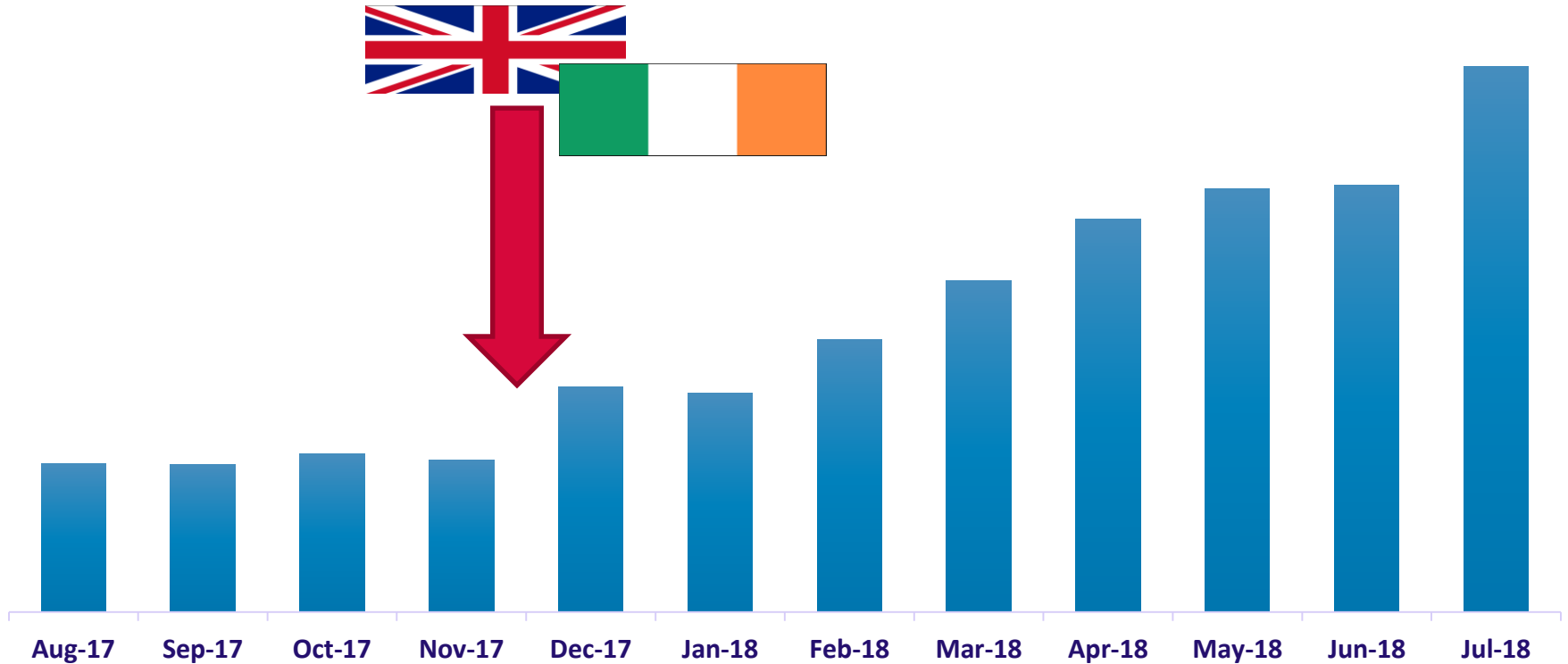


OET PERFORMANCE

TOTAL CANDIDATURE (FY16-18)

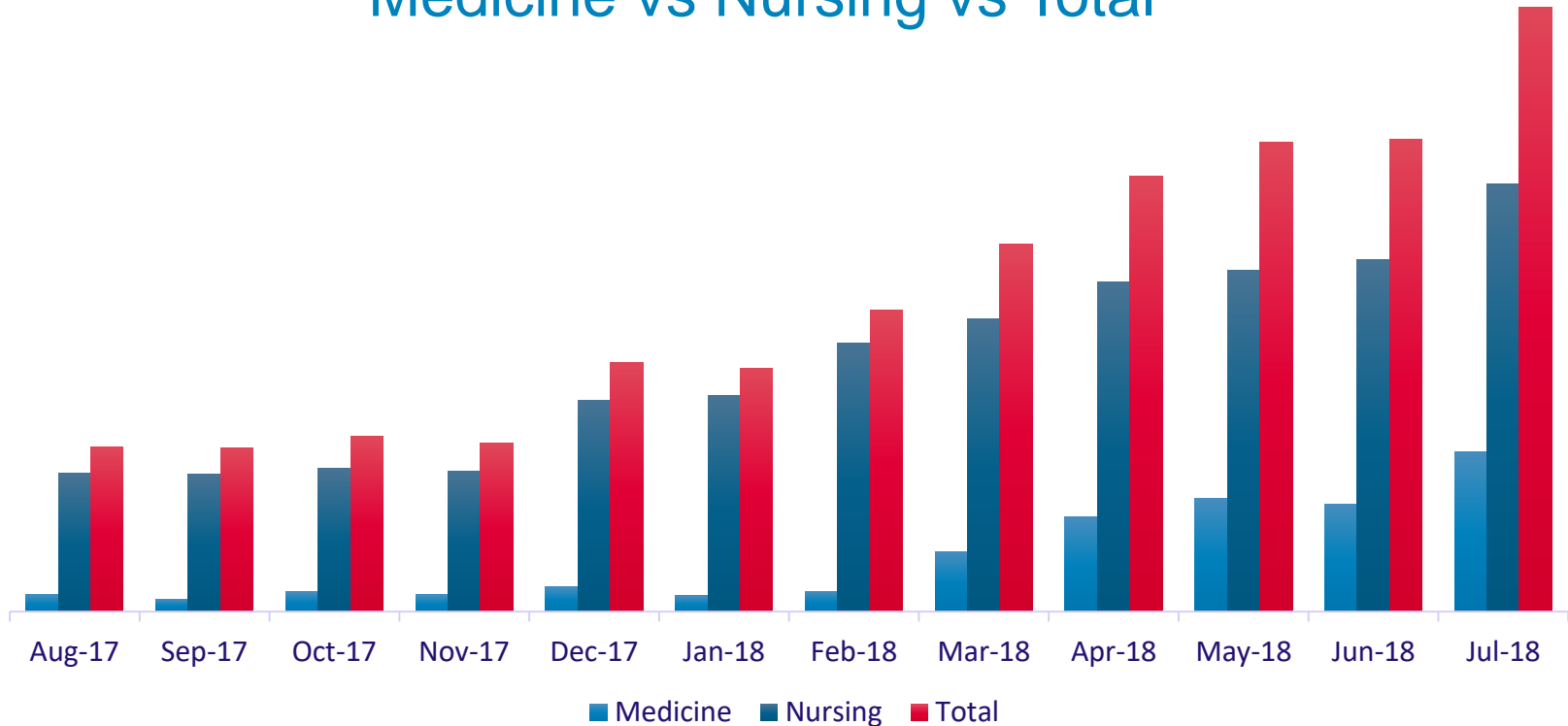


Candidature per Month – FY18



Candidature per Month - FY18

Medicine vs Nursing vs Total



The background features a scenic view of a Gothic cathedral with two prominent spires, likely Christ Church Cathedral in Oxford, situated on a grassy bank overlooking a river. The scene is captured during the golden hour, with warm sunlight illuminating the buildings. A large, semi-transparent blue geometric overlay, consisting of several overlapping trapezoidal shapes, covers the left and bottom portions of the image, creating a modern, abstract design.

WHAT IS OET AND WHY CHOOSE IT?

WHY CANDIDATES CHOOSE OET



Recognition

Accepted by healthcare boards and councils in the UK, Ireland, Australia, New Zealand, Singapore, Dubai and Namibia, as well as leading healthcare educators. OET is also recognised by Australian and New Zealand immigration for visa purposes.



Relevance and familiarity

OET is recommended by past test takers because test materials reflect healthcare scenarios leading to confidence on test day.



Confidence

OET helps candidates develop the language skills to communicate effectively in the healthcare workplace.

WHAT'S IN THE TEST – THE FOUR SUBTESTS



Listening

follow facts during a consultation
understand a short talk on a health-related topic



Reading

source information from multiple texts ('skim' and 'scan')
understand comprehensive texts



Writing

write to a peer, specialist colleague or carer (e.g. letter of referral)



Speaking

speak with a patient, relative or carer

HOW OET IS DIFFERENT TO OTHER TESTS



Example 1:
Writing

General/Academic English Test

Write an essay on
a general topic

OET

Write a healthcare
letter, usually a referral
letter, based on
case notes



Example 2:
Speaking

General/Academic English Test

Structured interview
on a general topic

OET

Health professional
patient role-plays

WHY OET IS NOT EASIER THAN OTHER TESTS

- OET is not easier than general or academic tests, it's different.
- OET tasks use real healthcare scenarios so healthcare professionals feel more comfortable, but that doesn't make it easier.
- Preparation is key to success in any test. Our advice to OET candidates is to prepare thoroughly to achieve their desired grade.

OET GRADES BENCHMARKED TO IELTS

OET results to August 2018	OET score from September 2018	OET band descriptors	IELTS equivalent band score
A	450 – 500	Can communicate very fluently and effectively with patients and health professionals using appropriate register, tone and lexis. Shows complete understanding of any kind of written or spoken language.	8.0 - 9.0
B	350 – 440	Can communicate effectively with patients and health professionals using appropriate register, tone and lexis, with only occasional inaccuracies and hesitations. Shows good understanding in a range of clinical contexts.	7.0 –7.5
C+	300 – 340	Can maintain the interaction in a relevant healthcare environment despite occasional errors and lapses, and follow standard spoken language normally encountered in his/her field of specialisation.	6.5
C	200 – 290		5.5 –6.0
D	100 – 190	Can maintain some interaction and understand straightforward factual information in his/her field of specialisation, but may ask for clarification. Frequent errors, inaccuracies and mis- or overuse of technical language can cause strain in communication.	Less than 5.5
E	0 – 90	Can manage simple interaction on familiar topics and understand the main point in short, simple messages, provided he/she can ask for clarification. High density of errors and mis- or overuse of technical language can cause significant strain and breakdowns in communication.	

QUICK QUIZ

1. What are the differences in the OET speaking compared to a general English test?
2. OET is easier than IELTS. True or False?
3. Can you name a few differences between IELTS and the OET exams?

The background features a scenic view of a Gothic cathedral, likely King's College Chapel in Cambridge, with its iconic spires and large stained-glass window. To the right, a white building with many windows is visible. In the foreground, a river flows, and a grassy bank is seen. The entire scene is overlaid with several semi-transparent blue geometric shapes, including triangles and polygons, which create a modern, layered effect. The text 'WHO ACCEPTS OET' is positioned in the lower-left area, set against a solid blue background.

WHO ACCEPTS OET

Government Departments

- Australian Department of Immigration and Border Protection (DIBP)
- New Zealand Immigration

Healthcare Boards and Councils

- **UK** – Nursing & Midwifery Council (NMC) and General Medical Council (GMC)
- **Ireland** – Nursing & Midwifery Board of Ireland (NMBI), Ireland’s Medical Council (MC), Dental Council of Ireland, CORU, The Pharmaceutical Society of Ireland
- **Australia** – most AHPRA Boards and healthcare profession Councils
- **New Zealand** – most healthcare Boards and Councils
- **Dubai** - Dubai Healthcare City Authority – Regulatory (DHCA)
- **Singapore** – most healthcare boards and councils

Qualification Authorities

- **Dubai** - Dubai Knowledge and Human Development Authority (KHDA)
- **New Zealand** - New Zealand Qualifications Authority (NZQA)

Universities, Education Providers and Recruiters

- **Australia** - leading universities, TAFEs and colleges
- **New Zealand** - leading universities and technical colleges

General Medical Council

- Medicine version of the test
- At least a grade 'B' in each sub-test
- The grades were achieved in the same test
- Most recent sitting
- Valid for 2-years

NMC Nursing & Midwifery Council

- Nursing version of the test
- At least a grade 'B' in each sub-test
- Combined 2 x tests within 6 months (4 sub-tests). No lower than C+ in any sub-test
- Valid for 2-years

The background features a photograph of a grand university building, likely a cathedral or a large hall, with a prominent Gothic-style window and spire. The building is situated on a grassy bank overlooking a river. The scene is captured in the late afternoon or early morning, with warm lighting. A large, dark blue geometric overlay, consisting of several overlapping trapezoidal shapes, covers the left and bottom portions of the image. The text 'SUPPORT FOR YOU' is printed in white, bold, sans-serif font on the blue overlay.

SUPPORT FOR YOU

PREPARATION PORTAL



Free sample material

Prepare and practice by downloading free sample materials for your profession.

Select profession

SELECT



Visit the OET Shop

Buy the official OET online course, practice books and feedback voucher for your profession.

Select profession

SELECT



Take a free OET Masterclass

Participate in an online masterclass for free expert advice on all four subtests.

REGISTER NOW



Find an OET preparation course provider

Do additional preparation through English schools or colleges offering OET preparation.

FIND A COURSE NEAR YOU

The Official OET Preparation Portal

Helping candidates prepare for the test



Wide range of preparation materials from the developers of OET, many of which are free of charge.



Online access to materials anytime, anywhere, helping candidates to prepare at their own pace.



Multiple formats, from interactive masterclasses and personalised feedback to courses and books.

PREPARATION AND PRACTICE MATERIALS

- Premium preparation providers
- OET Practice Books on Amazon
- Kaplan Official Guide to OET and online course
- MyOET Ready
- Start for Success



WORKING SUPPORT

- Joint branded candidate factsheets and website content
- OET Masterclass
- Listed on the OET website
- Featured on OET social media
- OET briefing sessions
- Account manager



QUICK QUIZ

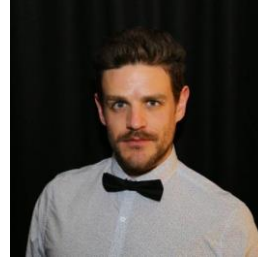
1. What are the names of the UK regulators who recognise OET?
2. Similar to passing any English language test what is the key for success?
3. Where can candidates find out further information about preparation help available?

WHO'S WHO



Will Saville
Business Development Manager
UK, Ireland & Europe

Will.Saville@oet.com.au



Shea Evans
Business Development Manager
Australasia

Shea.Evans@oet.com.au



Aashish Bhushan
Business Development Manager
South Asia

Aashish.Bhushan@oet.com.au



Afsaneh Rashidi
Business Development Manager
Rest of World

Afsaneh.Rashidi@oet.com.au

OET MISSION

To equip healthcare professionals with the healthcare-specific English language proficiency to enable outstanding patient-centred care through effective communication.



Welcome to

KAPLAN INTERNATIONAL ENGLISH

OET PREPARATION PROVIDER

KAPLAN *OET HISTORY*

- KIE has been providing language support for international staff working in the UK health & social care sector since 2011.
- KIE administered the UK OET trials in 2015- this was used to support the lobbying of the NMC and GMC to officially recognise OET in the UK
- Kaplan has been preparing health and social care staff for OET since 2016.
- KIE Torquay has been an OET test centre since 2017. KIE Manchester will open shortly and other KIE Test centres are planned in the UK
- Kaplan Test Prep brought out the first official OET preparation book

KAPLAN *OET PREPARATION*

- OETSUPP (KIE Torquay)
- Same price and structure as IELTSSUPP
- OETINT planned with increasing demand
- 1:1 additional lessons available at all our UK KIE colleges

GROUPS (8-100):

- OETINT
- OETSUPP
- OET OUTREACH -delivered by KIE College teams off site at NHS or private healthcare providers locations. Intensive/ VAC options available as well as tailored programs to fit in with healthcare professionals working patterns

OVER TO YOU!

- What strategies do you think would be useful in selling OET?
- What do you think the USP's are when selling Kaplan OET courses?
- Where do you think we are positioned in the market?

What do you think some of the common objections are when selling OET courses?

- 1.
- 2.
- 3.

Can you think of strategies to overcome each of these?

THANKYOU

Any Questions?